

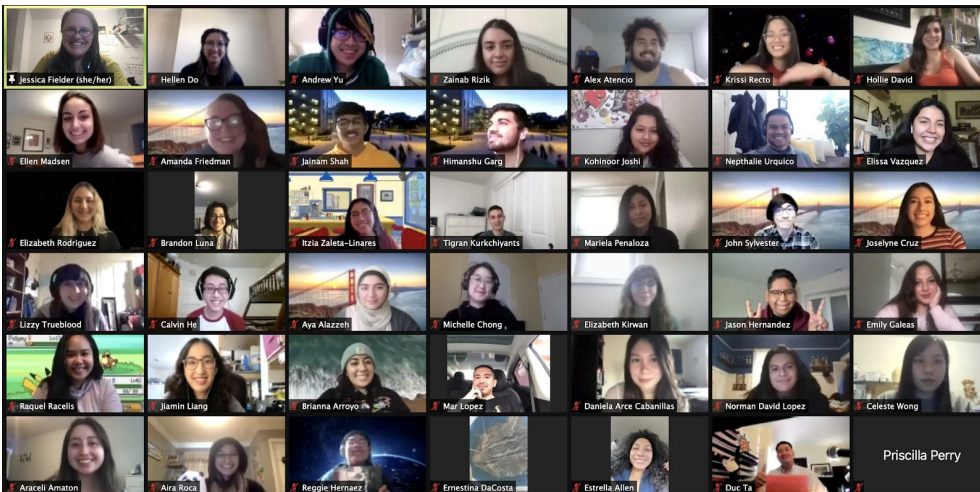


## Supplemental Instruction (SCI) Courses at SF State:

**Get more out of your Science Math, and Engineering classes!**

**Learn how to study effectively and efficiently with your friends!**

### **The Spring 2021 SI team**



In the Spring 2021 semester we will have SI courses for: BIOL 230, BIOL 240, BIOL 350, CHEM 115, CHEM 180, CHEM 215, CHEM 233, CHEM 321, CHEM 335, CSC 210, CSC 220, ENGR 205, ENGR 305, MATH 124, MATH 199, MATH 226, MATH 227, MATH 228, PHYS 111, PHYS 121, PHYS 220, and PHYS 230

**What is a SCI course?** SCI courses are small 1-unit classes that meet once per week for an hour and 40 minutes. Students work in small groups on practice problems and activities to support their learning in the parent course. There are no exams or homework in a SCI course: grades are based on class participation and in-class activities.

**Why take a SCI course?** Students who take SCI and attend every week **earn a half-letter grade better on average** are **twice as likely to pass** the parent course on their first try! Additionally, SCI helps you solidify your understanding, plan your study time, learn new study strategies, and make friends with other students in your class.

**How do I sign up for a SCI course?** Search the class schedule for courses under the prefix "SCI", and check that it matches your parent course (for example, students in CHEM 115 can take SCI 115). Enroll like you would in any other class, or attend the next class meeting if the semester has started to get a permission number.

**More questions?** Email the SI Program Director, Jessica Fielder at [jfielder@sfsu.edu](mailto:jfielder@sfsu.edu)

## Spring 2021 SCI Course Offerings

(times are subject to change, please check the class schedule for the most current information)

SCI Course	Parent Course	Meeting Time	Facilitators TBD	
SCI 111.01	PHYS 111	Mondays 2-3:40PM	Emilyn N.	Hollie D.
SCI 111.02	PHYS 111	Wednesdays 4-5:40PM	Alex A.	Joselyne C.
SCI 115.01	CHEM 115	Mondays 10-11:40AM	Aileen H.	Aya A.
SCI 115.02	CHEM 115	Thursdays 4-5:40PM	Judith L.	Hellen D.
SCI 121.01	PHYS 121	Mondays 4-5:40PM	Daniela A.	Raquel R.
SCI 124.01	MATH 124	Thursdays 4-5:40PM	Jaimin L.	Joshua F.
SCI 180.01	CHEM 180	Mondays 12-1:40PM	David L.	Ali A.
SCI 199.01	MATH 199	Mondays 4-5:40PM	Jesse A.	Mariela P.
SCI 205.01	ENGR 205	Mondays 12-1:40PM	Tigran K.	Ian U.
SCI 205.02	ENGR 205	Tuesdays 4-5:40PM	Celeste W.	Reggie H.
SCI 211.01	CSC 210	Mondays 4-5:40PM	Soulius J.	Jainam S.
SCI 211.02	CSC 210	Tuesdays 6-7:40PM	Elizabeth K.	Himanshu G.
SCI 215.01	CHEM 215	Fridays 10-11:40AM	Nancy D.	Ellen M.
SCI 215.02	CHEM 215	Fridays 12-1:40PM	Jazmin V.	Kohinoor J.
SCI 220.01	PHYS 220	Fridays 12-1:40PM	Emily G.	Katharine E.
SCI 221.01	CSC 220	Wednesdays 4-5:40PM	Michael Z.	Orion C.
SCI 226.01	MATH 226	Mondays 12-1:40PM	Brianna A.	Andrew Y.
SCI 226.02	MATH 226	Wednesdays 6-7:40PM	Araceli A.L.	Amanda F.
SCI 226.03	MATH 226	Thursdays 10-11:40AM	Lizzy T.	Brandon M.L.
SCI 227.01	MATH 227	Fridays 1:50-3:30PM	Mar L.	Mark K.
SCI 227.02	MATH 227	Wednesdays 6-7:40PM	Alyssa R.	Itzia Z.L.
SCI 228.01	MATH 228	Fridays 2-3:40PM	Omar T.	Aira R.
SCI 230.01	BIOL 230	Wednesdays 8-9:40AM	Priscilla P.	Menaal A.
SCI 230.02	BIOL 230	Thursdays 10-11:40AM	Elissa V.	Elizabeth R.
SCI 234.01	PHYS 230	Mondays 12-1:40PM	Michelle C.	Hector R.S.
SCI 240.01	BIOL 240	Tuesdays 4-5:40PM	Sophie G.	Jake B.
SCI 305.01	ENGR 305	Mondays 6:30-8:10PM	John S.	Christian K.
SCI 321.01	CHEM 321	Mondays 2-3:40PM	Kloe K.	Estrella A.
SCI 333.01	CHEM 233	Mondays 12-1:40PM	Daisy S.	Karolina M.
SCI 335.01	CHEM 335	Fridays 12-1:40PM	Krissi R.	Jason H.
SCI 350.01	BIOL 350	Wednesdays 4-5:40PM	Zainab R.	Calvin H.

### What do students think of SCI?

“Without this course I don't think I would have done as well just by studying on my own.” -SCI 215 student, Spring 2019

“SCI gave me confidence in my abilities.” -SCI 220 student, Spring 2018

“My group would give me different perspectives on a certain problem and would help me learn the concepts of the lessons better overall.” - SCI 226 student, Fall 2018

“Anytime there was a question the facilitators went above and beyond in order to make sure the concept in question was understood.” -SCI 115 student, Fall 2018