



Get into the Fall spirit with CSME

Welcome to October



Happy October, Everyone

October is a beautiful month! The warm sunny days of September are slowing down as the sun rises late and sets early. As usual at CSME, a lot is happening that makes our workspaces feel light and active. We are grateful to see more smiling faces of our CSME community joining Teacher Fellows meetings, visiting our office space for a snack, or stopping by for a chat.

Our monthly community meetings now include a guest speaker. In September, Dr. Andrés R. Vindas Meléndez, a former SF State math graduate student, current postdoc at the Mathematical Sciences

Research Institute and UC Berkeley, and future professor at Harvey Mudd, shared the work of his research team on quantifying inequalities and documenting elitism in the United States. While we continue to learn of inequities in STEM, we are inspired by the work being done to counter these injustices.

In the October edition of the newsletter, you'll find program updates and announcements. We present two new student spotlights, Mariela Penaloza and Emily Hernandez. CSME would also like to introduce Bay Area STEM events for students to participate and join the greater Bay Area STEM community.

Happy October,
CSME

TABLE OF CONTENTS

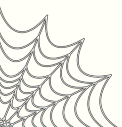
- Page 1** - Welcome
- Page 2** - Program Updates & Announcements
- Page 3 - 6** - Student Spotlight
- Page 7** - Affiliated Faculty
- Page 8** - Events
- Page 9** - Opportunities
- Page 10** - Recommendations
- Page 11** - Feedback/Donate

WHERE TO FIND US

Our main office is located in the Creative Arts building in room 127. Feel free to drop by anytime for a quiet place to study or to grab a snack between classes. You're always welcome at CSME.



CENTER FOR
SCIENCE &
MATHEMATICS
EDUCATION



Learning Assistants

Learning Assistants is a fun and new way to review science material. Previous LAs say it is a great program for any science major and a great style of learning. Grow and become a mentor with LAs.

Noyce STAJES

Previous STAJES scholars met once again for a reunion in September, sharing a meal and fond memories together. Learn more about the STAJES program on our website csme.sfsu.edu/noyce

SF Math Circle

SF Math Circle began classes last month with almost 200 students enrolled for the Fall, offering classes at SF State, Willie Brown Middle School, Jose Ortega Elementary School, and Sheridan Elementary School. Anyone interested in being a SF Math Circle facilitator in the Spring may apply now. Visit our 'Opportunities' page to learn more.



CSME's first ice cream social

STEM House

STEM House has returned in-person after 2 long years on hiatus and online classes. Check in next month for more updates.



A Teacher Fellows meeting

Supplemental Instruction

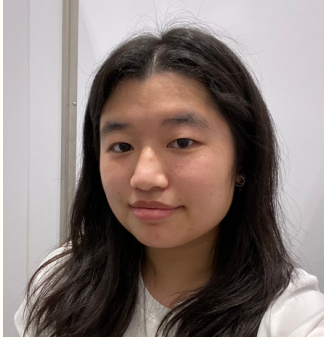
The 23 SCI classes are underway for the Fall semester in Biology, Chemistry, Computer Science, Engineering, Math, and Physics. This month we'll be sharing the application link for new facilitators who want to join the SI team in Spring 2024. Keep an eye out!

Teacher Fellowship

September saw the first Teacher Fellows meeting with a full house. We had many returning credential students and are eager to accept more undergrads. If you are interested in the Teacher Fellowship program, please contact Kim Seashore, kimseash@sfsu.edu.



CSME Staff Spotlight



Michelle Tang, Student Assistant

Michelle is a 3rd year student, majoring in Business with a concentration in Marketing. She is the Social Media Leader in K-pop Adventures at SF State. Some of her hobbies include watching anime, listening to music, reading books, and collecting sonny angels.

Michelle also runs our CSME Instagram account. Give us a follow @CSME_SFSU if you'd like to keep up with CSME and see all the fun events we have planned for this school year!



@CSME_SFSU



STUDENT SPOTLIGHT

Mariela Penalzo - Supplemental Instruction

“My name is Mariela Penalzo and I was born and raised in the city of Riverside, California. I am a first-generation student working toward my Bachelor of Science in Civil Engineering. I am in my final (senior) year here at San Francisco State University. This upcoming spring, I will be the first in my family to obtain a degree and graduate from a University.”

What interested you in the Supplemental Instruction program?

“What initially prompted my interest in Supplemental Instruction was when I took one of the supplemental courses my freshman year at SFSU. I enjoyed my class and as I wanted to learn more about the program, I asked my facilitators how they got started—shortly after they recruited me!”

What are some of the most memorable experiences you’ve had being a part of this program?

“Some of the memorable experiences throughout the program have really highlighted my time here at SF State. This would be like the amazing training and guidance that Jessica Fielder (program director) provides to the team. She makes this program the best that it can be, and we are all so grateful for her! Another memorable experience is always having a safe space to study, have lunch, or take a quick break on campus at our main office building at the Center for Science and Math Education. And lastly, the amazing students I meet every semester that enroll in my class!”

LGBTQ+ History Month



October is LGBTQ+ History month.

LGBTQ+ History Month is an annual month-long observance of lesbian, gay, bisexual and transgender history, and the history of the gay rights and related civil rights movements.

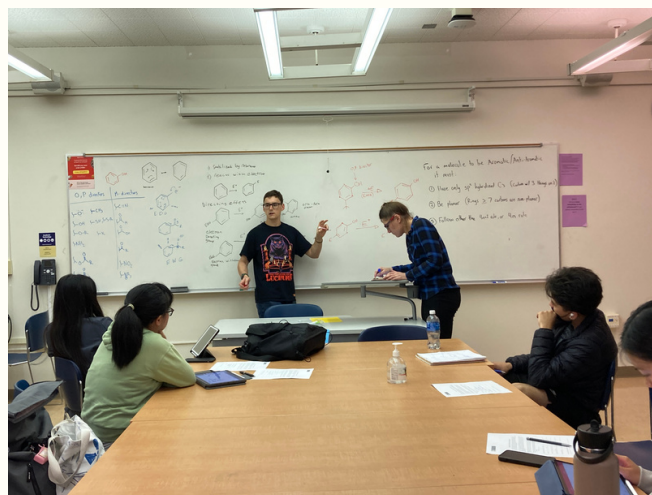
Discover some LGBTQ+ scientists in our monthly reading list on page 10.

How have you benefited or grown from your experience with Supplemental Instruction?

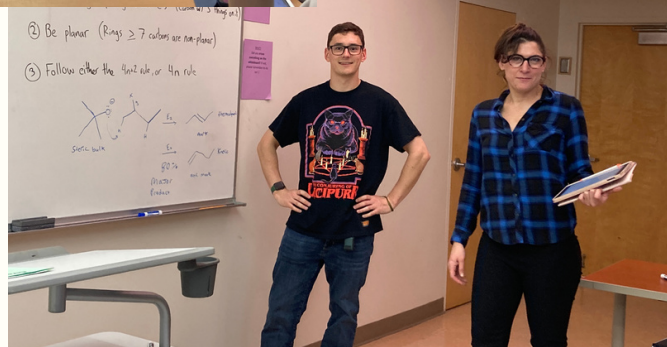
“I have grown immensely in this program. It has really helped build my confidence and be secure with myself while studying STEM. I think the majority of students, especially first-generation students, have felt the phenomenon “Imposter Syndrome,” including myself. The program always reminds me that we are all here just trying to figure it out and we can lean on one another when needed! The program has taught me to never be afraid to ask for help!”

What advice can you offer someone who is interested in joining Supplemental Instruction?

“Although it may seem a bit nerve-racking to facilitate an entire class, you are in amazing hands with the program and have so many resources and staff to support you! In my opinion, this is one of the best programs offered at SFSU. What makes it worth it for me is the genuine “thank you” conversations I have with my students throughout the semester and knowing you are making a difference in someone’s academic career! Thank you, Jessica and CSME for all your help, guidance, and support throughout the last five years! Go Gators and Class of 2024!”



SCI 335



CSME Community Member



Larry Horvath

Larry Horvath has officially retired from SF State. Fortunately, he has agreed to continue to collaborate with CSME so you will see him in and around our office spaces. With his happy disposition and depth of talent in STEM education, grant writing, and program development, Larry will continue to be an asset to CSME and all our programming goals.

CSME is excited to have Larry with us again!

Want to be featured or recommend someone for our next student spotlight?
Email lsao@sfsu.edu



STUDENT SPOTLIGHT

Emily Hernandez- Supplemental Instruction

“Hello, my name is Emily Hernandez. I am an SCI facilitator for General Chemistry in the Center for Science and Math Education at SFSU. I’m also a first-gen, Biochemistry major and minor in Race and Resistance, a fourth year set to graduate next spring, and I’m from the High Desert in SoCal. Outside of school, my favorite things to do are travel and explore new places like museums, parks, and restaurants, and I am a HUGE foodie. Beaches are my favorite places to go for relaxation and peace.”

What interested you in the Supplemental Instruction program?

“Although teaching is not my major, I still enjoy helping others like a tutor or teacher or even as a friend helping a classmate figure out a complicated problem. SCI was a great opportunity to explore my new passion for teaching. Being a SI facilitator for chemistry is a highly engaging and rewarding role for me and what I find most interesting is that it allowed me to deepen and enrich my knowledge of chemistry even more. Teaching and explaining concepts to others deepen the matter and motivates me to keep expanding my passion for the subject.”

Bay Area STEM Education Event



The Bay Area is host to many education focused STEM events. CSME wants to bring attention to these events in hopes that our community can join the greater Bay Area STEM teaching community.

The Bay Area STEM Educators Exchange brings educators together to learn from each other's successes and co-design around their shared challenges.

When: Friday, November 10th
9 am - 2 pm

Where: 1045 Derby Avenue
Oakland, CA 94601

Buy a ticket on Eventbrite:
<https://www.eventbrite.com/e/bay-area-stem-educators-exchange-tickets-651020488807>

What are some of the most memorable experiences you've had being apart of this program?

"The first day of instruction being an SCI facilitator was one of the most memorable because I remember being so excited to start this new journey and because I have never done something like this before. In class, the most memorable experience I had from being part of this program was the "aha" moments when students grasped a challenging idea that was both fulfilling and encouraging to solve. I'm happy that my guidance can and has significantly impacted their academic success and fostered a love for chemistry."

How have you benefited or grown from your experience with Supplemental Instruction?

"I've grown personally from this experience. Being a facilitator boosted my confidence and public speaking abilities. I learned to manage a group of students effectively and handle challenging questions. Also, through interacting with peers and professors, I built connections that extended beyond the classroom and supported me with my academic journey. And I am thankful to Jessica Fielder the Program Director of SCI and Kristen McGraw the chemistry liaison for SCI, for always helping me when I have questions and guiding me to a successful semester with them."

What advice can you offer someone who is interested in joining Supplemental Instruction?

"My advice for anyone who wants to join the program either as a student or facilitator is that being a part of this program offers opportunities for personal and professional growth, allows you to contribute to others' learning experiences and deepens your own understanding and appreciation of chemistry or any science and math subject you take. It's a fun and memorable experience you can have while going to college here."

CSME Staff Spotlight



Lisa Sao, Community Outreach Coordinator

Previously an undergrad at SF State and one of CSME’s student assistants, Lisa continues her postgrad journey with CSME as a CSU VISTA member.

Along with writing the newsletter, she hosts weekly online Coffee Corner sessions where anyone can stop by and ask questions about CSME and its programs.

Want to be featured or recommend someone for our next student spotlight?
Email lsao@sfsu.edu

CSME AFFILIATED FACULTY

Maria Zavala, Professor

Maria is the daughter of Peruvian immigrants, who moved all over the United States and finally settled in the San Francisco Bay Area. Originally fascinated with dinosaur bones and paleontology, Maria ultimately studied Mathematics at the University of California Santa Cruz, where she also played water polo. Maria taught in various K-12 settings while she completed her Ph.D. in Education at the University of Washington, Seattle, with an emphasis on Learning Sciences and Mathematics Education.



She joined the faculty at SF State in Fall 2012. Here she teaches courses related to teaching mathematics, learning theories, and bilingual education. Her research focuses on culturally responsive and sustaining mathematics pedagogies, mathematic identities of traditionally marginalized youth, and teaching mathematics for social justice.



Maria Zavala hosting a Teacher Summit for STEAM in elementary education
May 2023

CSME EVENTS

Socials/Fairs

Teach for the Bay: Transforming Ourselves, Transforming Education

Teach for the Bay's primary goal is to increase the number of future teachers transferring from a community college through the provision of resources, courses, and support. Current and future educators can attend a free conference and connect with other educators.

When:

Thursday, October 26th

12 pm - 9 pm

Friday, October 27th

9 am - 5 pm

Saturday, October 28th

9 am - 12:30 pm

Where: Online (Visit the Teach for the Bay website to register at teachforthebay.com)



Coffee Chat

Curious about CSME? Interested in learning more about our programs? Want to know more about becoming a teacher? Visit our CSME office in person and get your questions answered over a cup of tea and some snacks. We are here for you.

Stop by and receive free CSME swag.

When: In person every Wednesday, 12 pm - 1 pm

Where: Creative Arts 127

Can't make it in person?

Join us online every Friday, 1 pm - 2 pm

Zoom ID: 829 3522 5159

Passcode: 0xSCjv



Fall 2023 College of Science & Engineering Career Fair

When: Monday, October 16th

12 pm - 4 pm

Where: Annex 1, 1 N. State Drive, San Francisco, CA 94123

Teacher Fellows Fall 2023 Seminar

Interested in learning more about the Teacher Fellows program? Attend a seminar and get more information.

When: 10/13, 11/3, 12/8

4 pm - 6 pm

Where: Creative Arts 126

STAJES Fall 2023 Seminar

Dear STAJES members, don't forget to attend your monthly seminar meetings.

When: 10/27, 11/17, 12/15

4 pm - 6 pm

Where: Creative Arts 126

CSME OPPORTUNITIES

Scholarships

Teacher Fellows

Interested in becoming a K-12 STEM teacher and gaining support from a community of like-minded students who love science and math?

Consider joining Teacher Fellows and gain experience in the field while earning \$300 - \$1,500 a semester.

Visit our website to learn more about Teacher Fellows and consider applying to our program.



A Teacher Fellow helping students

Support

Campus Resources

SF State has an abundance of on-campus resources for students ranging from food/shelter support to equity support.

Visit the student resources website at studentresources.sfsu.edu/resources

If you're having trouble during this school year and need to talk to someone, visit CAPS (counseling and psychological services) <https://caps.sfsu.edu>

Find academic support at SF State's Tutoring and Academic Support Center (TASC). Visit their website at tutoring.sfsu.edu

Job Opportunities

SF Math Circle

Earn at least \$19/hour to work with small groups of elementary or middle school students as they explore interactive, hands-on puzzles and games. Contact David Klein at dklein@sfmthcircle.org

Supplemental Instruction

Applications are accepted on a rolling basis until all open positions are filled. Applicants will be contacted via email to set up follow-up interviews within a week or so after submitting their applications. Visit our website csme.sfsu.edu/SI to find an application.

CMC-N Annual Math Conference Volunteers

Student volunteers needed December 1st - 3rd. California Mathematics Counsel North is a committee dedicated to math education and serving teachers.

Student volunteers will receive free conference registration and a \$25 voucher.

For more information on this event or to register, visit the CMC-N website. Teacher Fellows interested in volunteering may contact Kim Seashore (kimseash@sfsu.edu) for accommodations support.



Spring 2023 SI instructors

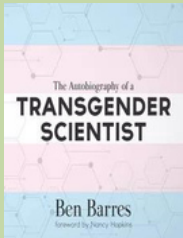
CSME's Monthly Book List

Part of the CSME mission is to confront racism, discrimination, and anti-blackness to create a culture of inclusion in the world around us. We would like to share a selection of books and articles to help inform our community of ways we can be conscious of issues surrounding injustice while celebrating the different cultures and identities that make our community meaningful.

The Autobiography of a Transgender Scientist

by Ben A. Barres

Ben Barres was known for his groundbreaking scientific work and for his groundbreaking advocacy for gender equality in science. In this book, completed shortly before his death from pancreatic cancer in December 2017, Barres (born in 1954) describes a life full of remarkable accomplishments—from his childhood as a precocious math and science whiz to his experiences as a female student at MIT in the 1970s to his female-to-male transition in his forties, to his scientific work and role as teacher and mentor at Stanford.



[*Find the free ebook here.*](#)

The Queer Variable

Curated by Dr Alfredo Carpineti and Dr Shaun O'Boyle

The Queer Variable is a collection of edited interviews with 40 people who are studying or working in Science, Technology, Engineering, and Maths (STEM) and who are part of the LGBTQ+ community. Contributors shared stories about their journey into science, their experiences of studying in STEM, and their thoughts on how the sector could be more welcoming, accessible, and inclusive.



Puzzle Corner

John noticed that the amount he was paying for his lunch was a rearrangement of the digits of the amount of money he had in his pocket, and that the money he had left over was yet another rearrangement of the same three digits! How much money did John start with?



Got the answer? The first five people to visit our office, Creative Arts 127, with the correct answer will win a prize. The winners and the answers will be revealed in our next newsletter.

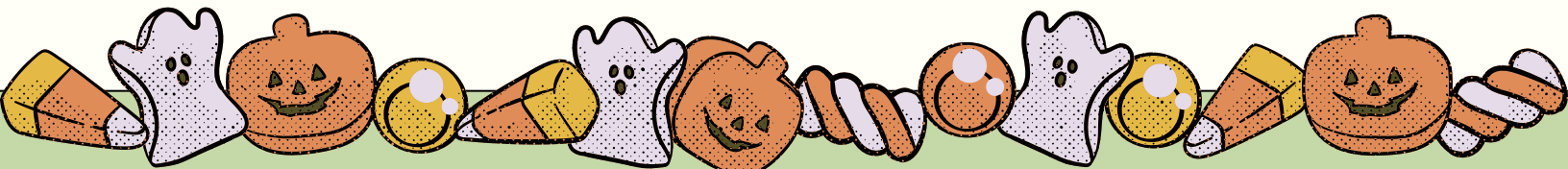
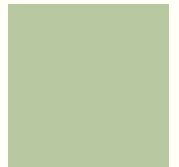
Congratulations to last month's puzzle corner winners!

Last month's puzzle corner answer: 11 slices

Grayson Kohary, Senior Environmental Science



Loan Tran, Senior Mathematics



We Would Love to Hear from You!

Your support and input at CSME is important to us. Let us know if you have feedback you'd like to offer—suggestions for student/teacher spotlights, book recommendations, etc. Have a club you'd like to advertise? Let us know about it!

Feel free to leave comments through the QR code or link provided!
https://sfsu.co1.qualtrics.com/jfe/form/SV_0ujtaHCjM08PPp4



Q&A

Got more questions about the Center or one of our programs? Fill out our Qualtrics survey and we'll get back to you ASAP.

Feel free to leave any questions through the QR code or link provided.
https://qfreeaccountssjc1.az1.qualtrics.com/jfe/form/SV_1YRXJxYRd5O9dNY



Keep Up With CSME News!

Subscribe to CSME's Mailing List and receive updates and announcements, including our monthly newsletters. Subscribe by sending an email to csme@sfsu.edu.

Donate to CSME

If you'd like to help CSME continue to support equity on our campus and across the Bay Area, please consider a donation to our program. Visit our website at csme.sfsu.edu/donate, click the 'Support CSME' dropdown menu, and select donate.

If you're interested in discussing a donation, contact our director, Tendai Chitewere (tendai@sfsu.edu).

Thank you!

