


csme@sfsu.edu |  @csme_sfsu | 415-405-4190



Welcome to October



Thank you for joining us during the Welcome Social last month! We enjoyed seeing you all participate in our activities and meet the greater CSME community. If you missed the event, don't worry! We'll be hosting more events throughout the year. So, be on the lookout for those announcements in our newsletter and flyers.

This October we'd like to introduce you to our student assistants who help us keep CSME going.

Most of the flyers and designs you see around our office were created by the student assistants. They're always the first ones to greet you when you walk through our office doors. Please come by to say hi!

Cheers,
CSME

TABLE OF CONTENTS

- Page 1** - Welcome
- Page 2** - SI Alternatives
- Page 3** - Resources
- Page 4** - Student Assistants
- Page 5** - Events
- Page 6** - Opportunities
- Page 7** - Recommendations
- Page 8** - Feedback/Donate

WHERE TO FIND US

Our main office is located in the Creative Arts building in room 127. Feel free to drop by anytime for a quiet place to study or to grab a snack between classes. You're always welcome at CSME.



CENTER FOR
SCIENCE &
MATHEMATICS
EDUCATION



Alternatives for SI



Since SI is not available this Fall 2024, here are some resources that provide STEM support for students.

Tutoring & Academic Support (TASC)

This program is for all SFSU students to achieve academic success and obtain feedback on assignments.



Educational Opportunity & Pathway Programs (EOP)

EOP like TASC, provides tutoring and learning support services in the Fall & Spring semesters.



Metro Academic Resource Center (MARC)

MARC provides a range of support services for students in the Metro Program and space where students can study and hangout while on campus.



School of Engineering

Tutoring services are provided for lower and upper division civil, computer, electrical, and mechanical engineering courses by Engineering Success Center tutors.



Student Support Service - Health Sciences (SOAR)

SOAR offers free comprehensive services designed to promote academic success, if you apply. Some services they provide is access to individualized tutoring, peer mentor support and faculty support.



Peer2Peer Mentor Collective

Student mentees will be paired with a mentor to enhances the student experience by linking students one-on-one with an upper-division peer mentor.



SI will return next semester in Spring 2025! Check our November newsletter for the new schedule and more information on how to apply to become a facilitator.

RESOURCES

RESOURCES

RESOURCES

STUDY SPACES/LOUNGE

Bring your friends, grab some snacks, and study in a quiet place.

CA 127 and CA 126D are quiet spaces available for students to study in during our office hours.

If you need a light snack between studying or classes, we provide a selection in our front office. There are also lunch resources in our 127 lounge e.g. microwave, fridge, and utensils.

LIBRARY

The books in our CA 127 lounge are free to check-out whenever you're in the mood to expand your knowledge on all things STEM education, math, science, and social justice.

COMPUTERS

Desktop computers are available in both CA 127 and 126D for free use.

RESERVE A ROOM

If you need to reserve a quiet space for studying with friends or holding a private meeting, reserve the conference room in CA 127. Email csme@sfsu.edu or check in at the front desk with our student assistants to reserve!

SCHOOL SUPPLIES

Forgot your pencil at home? Need a sticky note to jot down genius ideas? Let our staff know what kind of supplies you need and we'll try to help you with something from our supplies..

**THESE RESOURCES
ARE AVAILABLE
MON – FRI
9 AM – 4 PM
IN CREATIVE ARTS 127**

Meet Our

STUDENT ASSISTANTS

Thank you to all of our student assistants who work so hard helping us keep CSME going!

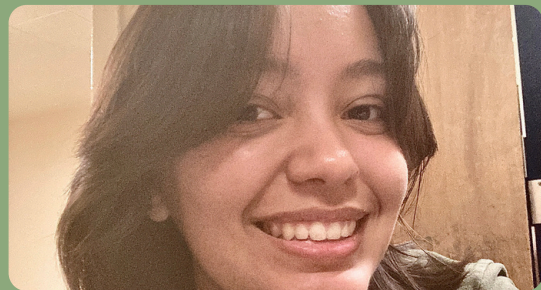
Hannah

Hannah is our lead student assistant, always making sure our office is running efficiently and smoothly.



Sol

Sol has created a variety of wonderful designs for CSME. Pick up one of her sticker designs in the Creative Arts 127 office!



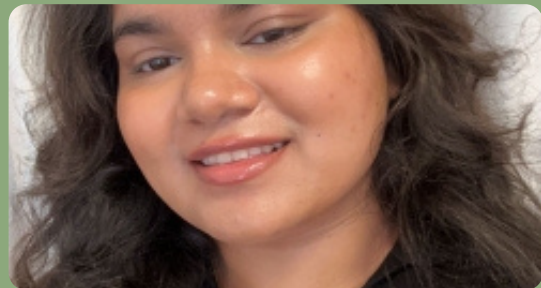
Michelle

Michelle is in charge of our social media posts on Instagram. Be sure to follow @csme_sfsu to keep up with her fun, creative posts.



Sarah

Sarah consistently works on our monthly display board. She's always keeps us up to date with all the latest information.



CSME EVENTS

CSME COFFEE CORNER

Curious about CSME? Interested in learning more about our programs? Want to know more about becoming a teacher?



Visit our CSME office in person and get your questions answered over a cup of tea and some snacks. We are here for you.

When: Every Friday
12 pm - 1 pm

Stop by and receive free CSME swag.

Where: Creative Arts 127

TEACHER FELLOWS FALL 2024 MEETINGS

Interested in learning more about the Teacher Fellows program? Attend a seminar, get a tasty dinner, and meet other students who are exploring a teaching career. For more information, contact Arnold at arnoldkhampaseut@sfsu.edu.

When: October 18th, November 15th, December 13th
4:30 pm - 6:30 pm

Where: Creative Arts 126





OPPORTUNITIES

Scholarships

Credential Students

Find Fall 2024 scholarships listed on the GCoE website here:
<https://gcoe.sfsu.edu/current-students/scholarships>

Applications are open from September 2nd to November 10th.

Teacher Fellows

Interested in becoming a K-12 STEM teacher and gaining support from a community of like-minded students who love science and math?

Consider joining Teacher Fellows and gain experience in the field while earning \$500 - \$1,500 a semester.

Visit our website to learn more about Teacher Fellows and consider applying to our program.



SF Math Circle Festival

Opportunities

SF Math Circle

SF Math Circle is now hiring for Spring 2025. Earn at least \$20/hour to work with small groups of elementary or middle school students as they explore interactive, hands-on puzzles and games.

To find out more information and to apply, visit sfmathcircle.org/facilitators

Learning Assistants

Apply to become a Learning Assistant today! If you're an undergrad passionate about chemistry, physics, astronomy, computer science, or math, Learning Assistants might be for you. Visit our website csme.sfsu.edu/learning-assistants or email Kim Coble (kcoble@sfsu.edu) to find out more information.

Support

Campus Resources

SF State has an abundance of on-campus resources for students, ranging from food/shelter support to equity support.

Visit the student resources website at studentresources.sfsu.edu/resources

If you're having trouble during this school year and need to talk to someone, visit CAPS (counseling and psychological services) <https://caps.sfsu.edu>

Find academic support at SF State's Tutoring and Academic Support Center (TASC). Visit their website at tutoring.sfsu.edu

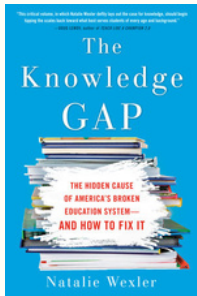
If you're ever feeling unsafe around campus, call the police at (415) 338-7200 for an escort.

CSME'S MONTHLY BOOK LIST



We would like to share a selection of books and articles to help inform our community of ways we can be conscious of issues surrounding injustice and racism while celebrating the different cultures and identities that make our community rewarding and meaningful.

CSME is now giving away free STEM education, math, science, and social justice books year-round! Stop by Creative Arts 127 and pick up something new to read.



The Knowledge Gap: The Hidden Cause of America's Education System—And How to Fix It by Natalie Wexler

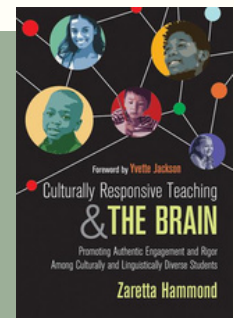
The Knowledge Gap isn't just a story of what schools have gotten so wrong—it also follows innovative educators who are in the process of shedding their deeply ingrained habits, and describes the rewards that have come along: students who are not only excited to learn but are also acquiring the knowledge and vocabulary that will enable them to succeed.

Culturally Responsive Teaching and the Brain

by Zaretta Lynn Hammond

A bold, brain-based teaching approach to culturally responsive instruction.

The achievement gap remains a stubborn problem for educators of culturally and linguistically diverse students. With the introduction of the rigorous Common Core State Standards, diverse classrooms need a proven framework for optimizing student engagement and facilitating deeper learning.



PUZZLE CORNER

A duck was given \$9, a spider was given \$36, a bee was given \$27.

Based on this information, how much money would be given to a cat?



Do you have an interest in puzzles like this and teaching kids? Join SF Math Circle and teach 2nd - 8th grade kids while gaining teaching experience. Visit our opportunities page and find out how to join.

Got the answer? The first five people to visit our office, Creative Arts 127, with the correct answer will win a prize. The winners and the answers will be revealed in our next newsletter.

We Would Love to Hear from You!

Your support and input at CSME is important to us. Let us know if you have feedback you'd like to offer—suggestions for student/teacher spotlights, book recommendations, etc. Have a club you'd like to advertise? Let us know about it!

Feel free to leave comments through the QR code or link provided!
https://sfsu.co1.qualtrics.com/jfe/form/SV_74cHrE7WXY8imiO



Q&A

Got more questions about the Center or one of our programs? Fill out our Qualtrics survey and we'll get back to you ASAP.

Feel free to leave any questions through the QR code or link provided.
https://qfreeaccountssjc1.az1.qualtrics.com/jfe/form/SV_1YRXJxYRd5O9dNY



Keep Up With CSME News!

Subscribe to CSME's Mailing List and receive updates and announcements, including our monthly newsletters. Subscribe by clicking the link or scanning the QR code:
https://qfreeaccountssjc1.az1.qualtrics.com/jfe/form/SV_2s1liWxVkuEPqu2



Donate to CSME

If you'd like to help CSME continue to support equity on our campus and across the Bay Area, please consider a donation to our program. Visit our website at csme.sfsu.edu/donate, click the 'Support CSME' dropdown menu, and select donate.

If you're interested in discussing a donation, contact our director, Tendai Chitewere (tendai@sfsu.edu).

Thank you!

Follow Our Instagram

Keep up with CSME on our Instagram page at [@csme_sfsu](https://www.instagram.com/csme_sfsu)! Get information about our events, programs, and important CSME updates.



@csme_sfsu