



CENTER FOR
SCIENCE &
MATHEMATICS
EDUCATION



Helpful Information About CSME



CSME.SFSU.EDU



CSME_SFSU



TABLE OF CONTENTS

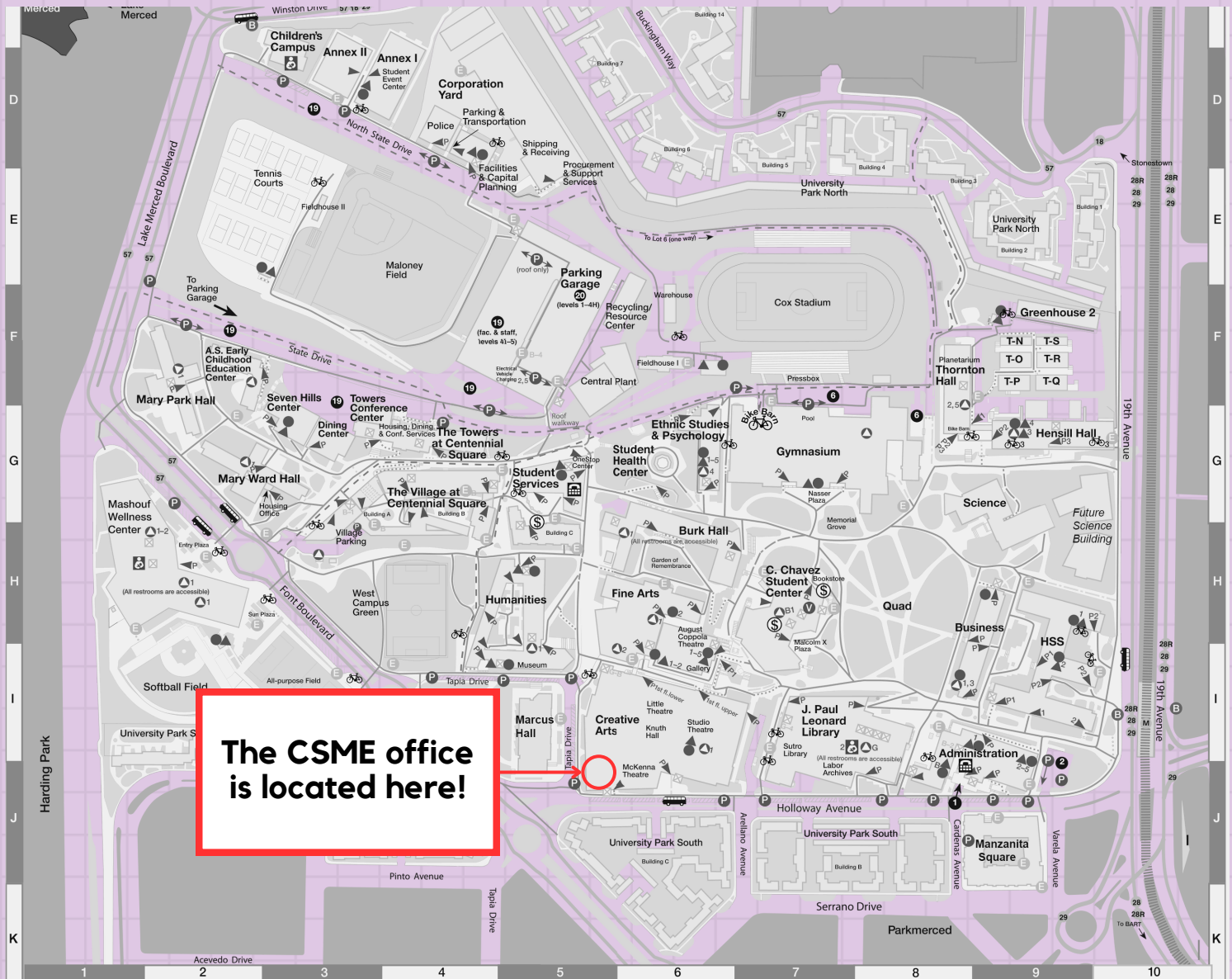
OUR CENTER	2
STUDY SPACES	3
CSME RESOURCES	4
CSME PROGRAMS	5
FALL EVENTS	7
SAVE THE PLANET!	8
CONTACT US!	9



OUR CENTER

The main office of the Center for Science and Math Education (CSME) is located in Creative Arts 127 (CA 127). Our second space, Creative Arts 126 (CA 126), is located next door and houses the terraces, studio 2, and the CSME director's office.

Our office is open from 9:00 AM - 4:00 PM.



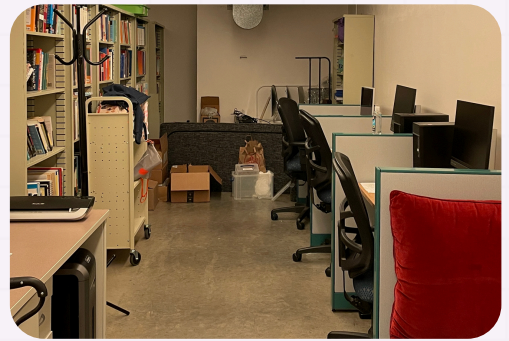
CENTER FOR
SCIENCE &
MATHEMATICS
EDUCATION

STUDY SPACES

These study spaces are open to all students during our operating hours.

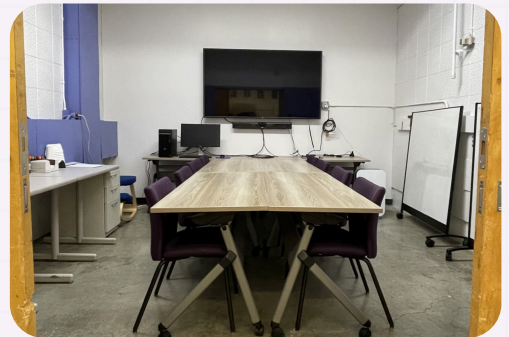
LOUNGE

Students can use the lounge located in the back of CA 127. Students can work on assignments, study, or relax between classes. The lounge provides access to computers, the resource library, and kitchen appliances.



CONFERENCE ROOM

Students can book the conference room located in CA 127. Students can form study groups or hold program meetings. The monitor and whiteboards are available to use. To reserve the room, request at the front desk or fill out the interest form.



TERRACES

The terraces is located up the stairs in CA 126. Students can work on assignments, study, or relax between classes. The terraces provides access to computers, whiteboards, and kitchen appliances.



CENTER FOR
SCIENCE &
MATHEMATICS
EDUCATION

CSME RESOURCES

SCHOOL SUPPLIES

CSME provides supplies to our students. Inform our team what item you want to request. The storage room includes, but is not limited to:

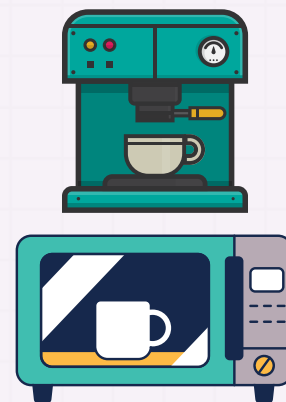
- Pencil & Pen
- Notebook
- Flashcards
- Post-it Notes
- Expo Markers
- Folders



APPLIANCES

Kitchen appliances are accessible in the lounge and terraces for our students. Some appliances students are free to use include:

- Refrigerator
- Microwave
- Coffee Maker
- Water Dispenser
- Toaster Oven



ELECTRONICS

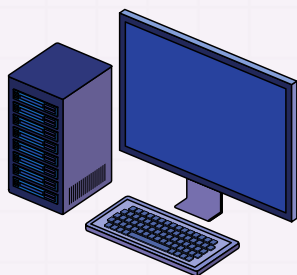
Desktop computers are available for use at all times in the CSME office.

CA 127 (Lounge).

- 3 computers

CA 126 (Terraces).

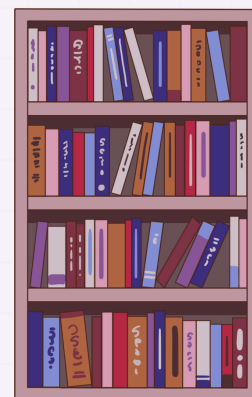
- 2 computers



RESOURCE LIBRARY

The resource library is located in the lounge and books may be checked out by students. The following topics are covered in these books:

- Mathematics
- Biology
- Chemistry
- Physics
- Education



CENTER FOR
SCIENCE &
MATHEMATICS
EDUCATION

CSME PROGRAMS

TEACHER FELLOWSHIP

Teacher Fellowship supports a cohort of STEM majors and credential students interested in becoming K–12 teachers. Our program brings together aspiring teachers to gain real-world experience in the classroom early on while pursuing their degrees. Students who join will attend seminars, receive mentorship, and earn a stipend.



SUPPLEMENTAL INSTRUCTION

Science Supplemental Instruction is a series of one-unit courses supplementing the STEM major gatekeeper courses. The instructors create learning communities to focus on conceptual understanding and mutual support. Instruction is mainly through hands-on and interactive small-group work.



SF MATH CIRCLE

The SF Math Circle works to make math accessible, inclusive, and fun for 2nd through 5th graders in after-school classes and camps. This program offers compelling, low-floor, high-ceiling activities that make mathematical thinking accessible and fun for students from diverse backgrounds.



CENTER FOR
SCIENCE &
MATHEMATICS
EDUCATION

CSME PROGRAMS

LEARNING ASSISTANTS

Learning Assistants are undergraduates who are part of a community of inclusive teaching and learning in STEM. They participate in an active, inclusive learning environment in a section of a STEM course. They can provide faculty useful insights on what students are struggling with, both in the classroom and in their everyday lives.



STEM HOUSE

STEM HOUSE arranges for undergraduate future teachers to spend a semester doing paired teaching with small groups of 3rd through 5th grade students. Local elementary classrooms partner with SF State by bringing their students to campus for an inspirational college science experience, complete with lab coats and goggles.



DISCRETE MATH

Discrete mathematics is a core course in mathematics and computer science degree programs. Discrete Math reports on a California-wide initiative to revamp discrete math curriculum and instruction by introducing seven team-based lessons to replace traditional lectures and provide faculty with training on these methods. Early results show improved student engagement, greater instructor understanding of equity-focused practices, and a shift in instructors' perceptions of student potential.



CENTER FOR
SCIENCE &
MATHEMATICS
EDUCATION

FALL EVENTS

TEACHER FELLOWSHIP SEMINARS

Teacher Fellowship hosts seminars from **4:30 to 6:30 PM on Fridays**. In these seminars, students participate in STEAM-based activities and receive mentorship from local teachers. Seminar Dates for Fall 2025:

TBD (email csme@sfsu.edu for information)

Please email Arnold Khampaseut at least one week prior to a seminar date if you would like to attend a seminar.



COFFEE CORNER

Coffee Corner offers students support, guidance, and answers general questions about our center and its programs. It is an informal meeting time for any student to come by our offices.

Date: Every Friday

Time: 12:00 - 1:00 PM

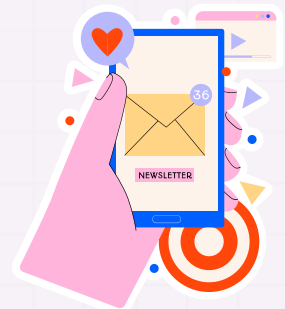
Location: Creative Arts 127



MONTHLY NEWSLETTER

Our monthly newsletter contains all of the current CSME news. You'll discover career and scholarship opportunities, resources, and future CSME events.

You can find our latest and previous newsletters directly on our website.



CENTER FOR
SCIENCE &
MATHEMATICS
EDUCATION

SAVE THE PLANET!

When using the CSME study spaces, we ask that you please maintain a clean work environment, such as picking up after yourself and being mindful of where you dispose your trash. Please choose to protect and conserve the environment while also easing the workload of our custodial services, for which we are grateful.

You can refer to the list below to determine what items belongs in which bin:



Recycle

- 1 Paper
- 2 Cardboard - **flattened**
- 3 Plastic bottles & containers
- 4 Metal cans
- 5 Glass bottles & jars

MUST be EMPTY, CLEAN & DRY

 No Plastic Bags





Compost

- 1 Food scraps
- 2 Pizza boxes, napkins & paper towels
- 3 Compostable bags
- 4 Compostable food packaging
- 5 Yard waste & plants

 No Plastic Bags





Garbage

- 1 Plastic bags, wraps & wrappers
- 2 Bubble envelopes & mailers
- 3 Styrofoam & food foam trays
- 4 Diapers & pet waste - **bagged**
- 5 Hygiene products & personal protective equipment



* Creative Art 125 has a designated space to recycle your E-WASTE *



CENTER FOR
SCIENCE &
MATHEMATICS
EDUCATION

CONTACT US!

We have provided you with a list of contacts for our directors and staff, in case you have specific questions.

Please email the CSME Main Office at csme@sfsu.edu with any general inquiries or concerns, or if you are unclear of who to contact.

CSME STAFF

Tendai Chitewere	CSME Director	tendai@sfsu.edu
Kristen Vargas	Administrative Analyst	krisvargas@sfsu.edu
Arnold Khampaseut	Program Coordinator	arnoldkhampaseut@sfsu.edu
Lisa Sao	VISTA Fellow	lsao@sfsu.edu

CSME PROGRAM DIRECTOR

Jessica Fielder	Supplemental Instruction	jfielder@sfsu.edu
David Klein	SF Math Circle	dklein@sfmathcircle.org
Evra Baldinger	Teacher Fellowship	evrabaldinger@sfsu.edu
Kim Seashore*	Teacher Fellowship	kimseash@sfsu.edu
Kim Coble	Learning Assistants	kcoble@sfsu.edu
Stephanie Sisk-Hilton	STEM HOUSE	stephsh@sfsu.edu
Aditi Grossman	Expanding Equity and Access in Discrete Math	aditigrossman@sfsu.edu
Shandy Hauk	Expanding Equity and Access in Discrete Math	hauk@sfsu.edu

We appreciate your beginning or continuation to CSME!



CENTER FOR
SCIENCE &
MATHEMATICS
EDUCATION