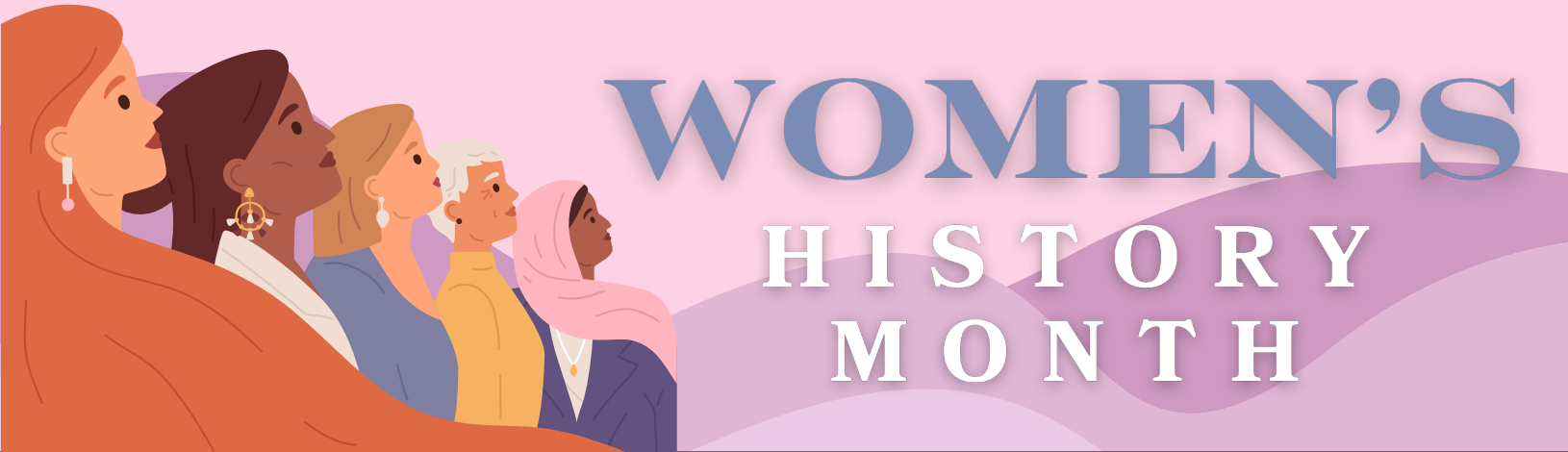


csme@sfsu.edu |  @csme_sfsu | 415-405-4190



Welcome to March



Welcome to March and Women's History Month!

As the days start to get longer, and as the semester rolls into full force, we are reminded that CSME is a special place to grow and develop for us as individuals and for our community. Our science and mathematics teaching community is a welcoming space for everyone, a safe space to those who need refuge, and an energizing place to get work done or meet new friends. We are a strong community because we care about each other and our educational accomplishments. We know working together, in a welcoming and inclusive community enables us to make our society a better place.

This month, CSME has a wonderful display of amazing women in STEM and STEM education in the hallway outside our CA 127 office. Some are famous, many are just like you and me. Stop by and learn about contributions women have made to our everyday lives through STEM.

While spring is around the corner, so are midterms and spring break. As we get ready for the middle of the semester, CSME invites you and your classmates, study mates, and friends to join us for tea every Wednesday from 3:00 - 3:30 pm in CA 127. This is a relaxed space to talk with each other, meet other students, staff, and faculty in and around CSME. Or, stop by our in-person Coffee Corner for casual conversation or mentoring. **We are in your corner! We have your back!** Come hang out, ask for advice, and share your thoughts and feelings, or just be. You are part of our STEM education community and we are glad you are here.

There are lot of cool opportunities in this newsletter including a new opening as a STEPS tutor (page 3), research opportunities, and of course a chance to get CSME swag!

Welcome to spring!
 CSME

TABLE OF CONTENTS

- Page 1** - Welcome
- Page 2** - Women's History Month
- Page 3** - STEPS
- Page 4** - Our Programs
- Page 5** - Program Updates
- Page 6** - Events
- Page 7** - Opportunities
- Page 8** - Recommendations
- Page 9** - Donate

WHERE TO FIND US

Our main office is located in the Creative Arts building in room 127. Feel free to drop by anytime for a quiet place to study or to grab a snack between classes. You're always welcome at CSME.



CENTER FOR
 SCIENCE &
 MATHEMATICS
 EDUCATION

WOMEN IN STEM



SYMONE BARKLEY

Symone Barkley is a scientist and educator, working in the marine science field. She passionately teaches about the ocean and environment while supporting educators as the Chief Learning Officer for Black In Marine Science.

Read more about Symone on her website:

<https://www.scientistsymone.com/>



DR. BEVERLY DANIEL TATUM

Dr. Beverly Daniel Tatum is the author of the best selling book, Dr. Beverly Daniel Tatum, Why Are All the Black Kids Sitting Together in the Cafeteria. She is an award-winning educational leader, bringing unique insights on effective action for social change.

Read more about Dr. Tatum on her website:

<https://www.beverlydanieltatum.com/>



DANICA MCKELLAR

Actress Danica McKellar, also known as Winnie Cooper on “The Wonder Years” television series, spoke in front of a congressional subcommittee about the importance of STEM education in school curriculums. Additionally, McKellar writes children’s books to encourage kids of all ages and genders to embrace math.

Read more about Danica on her website:

<https://danicamckellar.com/math-books/>

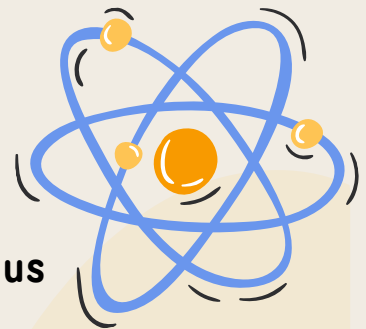


CSME IS HIRING TUTORS

STEM Tutoring Enrichment Program for Students (S.T.E.P.S) is hiring tutors to support community colleges students and community members in their STEM courses.

Requirements

- * Background in STEM fields (graduate or undergraduate coursework)
- * Prior teaching or tutoring experience is a plus
- * Passion for education and mentorship



Advantages

- * Flexible schedule
- * Starting pay rate: \$22.50



Scan the QR
code to apply!



OUR PROGRAMS

Learning Assistants

Want to help facilitate active learning in science courses? Well, look no further. Become a Learning Assistant and support other students in science courses and earn credits in a unique and fun way.

Noyce STAJES

STEM Teaching toward A Just and Equitable Society (STAJES) program is a National Science Foundation (NSF) funded program to provide scholarships to students who are committed to teaching science or mathematics in high-need school districts upon the completion of a single subject teacher credential program.

SF Math Circle

SF Math Circle works to make math accessible, inclusive, and fun for 2nd through 8th graders in after-school classes and camps. We offer compelling, low-floor, high-ceiling activities that make mathematical thinking accessible and fun for students from diverse backgrounds.

Teacher Fellowship

Each year, CSME supports a cohort of STEM majors and credential students interested in being K-12 teachers. Teacher Fellows create a supportive community of aspiring teachers who gain experience in the field while earning their degrees. Teacher Fellows receive a stipend, extra mentoring, special seminars and access to a dedicated study center.

Supplemental Instruction

Take a fun one-unit SCI course to help study efficiently and effectively with your friends. Work in small groups on practice problems and activities to support learning in the parent STEM course with the help of two friendly undergrad facilitators.



STEM House

STEM HOUSE

Local elementary classrooms partner with SF State by bringing their students to campus for an inspirational college science experience, complete with lab coats and goggles. STEM HOUSE arranges for undergraduate future teachers to spend a semester doing paired teaching with small groups of students in grades 3 through 5.

STEPS

STEPS offers tutoring in STEM courses to community college students and community members. STEPS is designed to support CSME students in providing positive, encouraging, and effective tutoring in STEM courses.

PROGRAM UPDATES

SAN FRANCISCO MATH CIRCLE

- Led enrichment sessions for 3rd-4th, 5th-6th, and 7th-8th graders at The Nueva School's Intercession and sessions for 3rd-4th and 5th-6th graders at Nueva School Math Circle event
- Led Math Circle professional development for staff at Dolores Huerta Elementary School and San Francisco Community School
- Supported Math Nights at Sanchez Elementary School and SF Community School
- Participated at San Francisco Summer Resource Fair
- Launched new weekly Math Circle classes at Alvarado Elementary School, Dolores Huerta Elementary School, Miraloma Elementary School, and San Francisco Community School!

SFMC EVENTS

SFMC Math Festival

This month SFMC will be hosting a Math Festival on campus for 1st - 8th grade students. Sign up on the Math Circle website at sfmathcircle.org/sf-state-math-festival

When: March 15th, 2 pm - 4 pm

Where: SF State

Summer 2025 Math Camp

Sign up your 2nd - 5th grade student for SF Math Circle's Summer Math Camp. For more information, go to their website at <https://addie-evans.squarespace.com/math-camp>

SUPPLEMENTAL INSTRUCTION

Join SI

Supplemental Instruction is hiring for Fall 2025 after Spring break. Look for the open application during the week of April 1-4th on our website csme.sfsu.edu/SI.



2/21 Teacher Fellowship Seminar

Hiring

CSME EVENTS

CSME COFFEE CORNER

Curious about CSME? Interested in learning more about our programs? Want to know more about becoming a teacher?

Visit our CSME office in person and get your questions answered over a cup of tea and some snacks. We are here for you.

Stop by and receive free CSME swag.

When: Every Friday
12 pm - 1 pm

Where: Creative Arts 127



TEACHER FELLOWS SPRING 2025 MEETINGS

Interested in learning more about the Teacher Fellows program? Attend a seminar, get a tasty dinner, and meet other students who are exploring a teaching career. For more information, contact Arnold at arnoldkhampaseut@sfsu.edu.

When: 2/21, 3/14, 4/18
4:30 pm - 6:30 pm

Where: Creative Arts 126





OPPORTUNITIES

Scholarships

Teacher Fellows

Interested in becoming a K-12 STEM teacher and gaining support from a community of like-minded students who love science and math?

The Teacher Fellows Program is still accepting applications from students. Join Teacher Fellows and gain experience in the field while earning \$500 - \$1,500 a semester.

Visit our website to learn more about Teacher Fellows and consider applying to our program.

Opportunities

SF Math Circle

SF Math Circle is hiring for Summer and Fall 2025. Earn at least \$20/hour to work with small groups of elementary or middle school students as they explore interactive, hands-on puzzles and games. Priority application deadline is Friday, March 28th.

To find out more information and to apply, visit sfmathcircle.org/facilitators

Learning Assistants

Apply to become a Learning Assistant today! If you're an undergrad passionate about chemistry, physics, astronomy, computer science, or math, Learning Assistants might be for you. Visit our website csme.sfsu.edu/learning-assistants or email Kim Coble (kcoble@sfsu.edu) to find out more information.

Free CSET Prep Class

SDSU offers FREE online CSET preparation classes that are open to the public- SDSU enrollment and San Diego residency are not required. They typically have Winter and Summer sessions, where they provide free materials and reimbursements for test fees (as long as the student pass the exam).

If you're interested, [sign this form](#).

Student Evaluation Proctor

Scientific Adventures for Girls is seeking 6 Student Evaluation Proctors to proctor end of the year survey evaluations to their TK-6th grade girls in elementary schools in Richmond and Oakland. Proctors will be paid \$21/hour. Visit their website for more information and how to apply at scientificadventures.org/student-evaluation-proctor-jd

Support

Campus Resources

SF State has an abundance of on-campus resources for students, ranging from food/shelter support to equity support.

Visit the student resources website at studentresources.sfsu.edu/resources

CAPS: If you're having trouble during this school year and need to talk to someone, visit CAPS (counseling and psychological services) <https://caps.sfsu.edu>

TASC: Find academic support at SF State's Tutoring and Academic Support Center (TASC). Visit their website at tutoring.sfsu.edu

Safety: If you're ever feeling unsafe around campus, call the police at (415) 338-7200 for an escort.

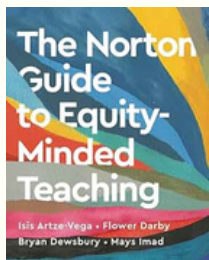
The SAFE Place: The SAFE Place is a survivor-focused, trauma-informed program that provides **FREE** and **CONFIDENTIAL** support services to survivors of sexual assault, intimate partner violence, stalking, and sexual harassment (sexual violence) while working with campus partners to end sexual violence. Visit their website at <https://dos.sfsu.edu/safeplace>

CSME'S MONTHLY BOOK LIST



We would like to share a selection of books and articles to help inform our community of ways we can be conscious of issues surrounding injustice and racism while celebrating the different cultures and identities that make our community rewarding and meaningful.

Stop by Creative Arts 127 and pick up something new to read.



The Norton Guide to Equity-Minded Teaching

by Isis Artze-Vega, Flower Darby, Bryan Dewsbury, Mays Imad

Written by renowned teaching and learning experts, this guide offers concrete steps to help any instructor striving to ensure that all students—and, in particular, historically underserved students—have an equal chance for success. Here you'll find actionable tips, grounded in research, for teaching college classes online, in person, and everywhere in between.

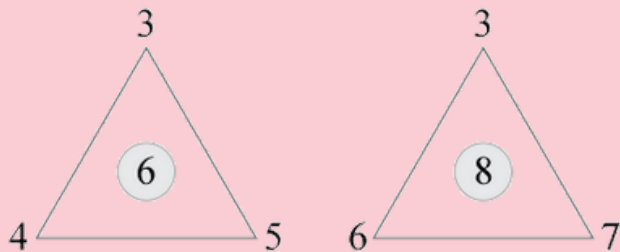
Equality or Equity: Toward a Model of Community-Responsive Education

by Jeffrey M. R. Duncan-Andrade

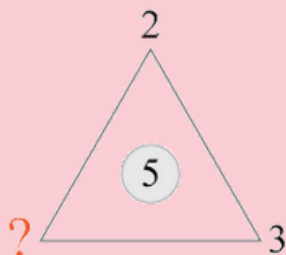
A leading scholar-practitioner and ardent proponent of culturally responsive forms of education, Jeffrey M. R. Duncan-Andrade aims to settle the debates over whether we should work toward a public education system built on the goal of equality or equity. Duncan-Andrade centers his argument on the importance of creating meaningful education experiences for all students, particularly for low-income students of color and immigrant students, who have gained relatively fewer benefits from decades of equality-focused education reform.



PUZZLE CORNER



What # is ?



Do you have an interest in puzzles like this and teaching kids? Join SF Math Circle and teach 2nd - 8th grade kids while gaining teaching experience. Visit our opportunities page and find out how to join.

Got the answer? The first five people to visit our office, Creative Arts 127, with the correct answer will win a prize. The winners and the answers will be revealed in our next newsletter.

February's answer: 6

We Would Love to Hear from You!

Your support and input at CSME is important to us. Let us know if you have feedback you'd like to offer—suggestions for student/teacher spotlights, book recommendations, etc. Have a club you'd like to advertise? Let us know about it!

Feel free to leave comments through the QR code or link provided!
https://sfsu.co1.qualtrics.com/jfe/form/SV_74cHrE7WXY8imiO



Q&A

Got more questions about the Center or one of our programs? Fill out our Qualtrics survey and we'll get back to you.

Feel free to leave any questions through the QR code or link provided. https://qfreeaccountssjc1.az1.qualtrics.com/jfe/form/SV_1YRXJxYRd5O9dNY



Keep Up With CSME News!

Subscribe to CSME's Mailing List and receive updates and announcements, including our monthly newsletters. Subscribe by clicking the link or scanning the QR code:
https://qfreeaccountssjc1.az1.qualtrics.com/jfe/form/SV_2s1liWxvkuEPqu2



Donate to CSME

If you'd like to help CSME continue to support equity in STEM education and teacher preparation on our campus and across the Bay Area, please consider a donation to our program. Visit our website at csme.sfsu.edu/donate, click the 'Support CSME' dropdown menu, and select donate.

If you're interested in discussing a donation, contact our director, Tendai Chitewere (tendai@sfsu.edu).

Thank you!

Follow Our Instagram

Keep up with CSME on our Instagram page at [@csme_sfsu](https://www.instagram.com/csme_sfsu)! Get information about our events, programs, and important CSME updates.



@csme_sfsu