


csme@sfsu.edu |  @csme_sfsu | 415-405-4190



Welcome to January



It's 2024!

Happy New Year!

Welcome to 2024. These moments of temporal transition can be helpful for healing, dreaming, and restoring our sense of self and place. We hope this new year bring us all to a place of peace.

There are a few new changes at CSME this semester. We are excited to continue SI while Jessica is on leave and will have new drop-in hours

for informal advising, mentoring, or a chance to meet you over tea or coffee.

We are also exploring an “Ask CSME” column where you can ask anonymous questions about all things STEM, education, and teaching. We will post the questions and our responses in each newsletter. Visit page 4 to learn more about how to send us anonymous questions to be answered by an advisor.

If you are taking a winter course, we hope it is going well. Otherwise, we wish you a rejuvenating start to the new year and look forward to seeing you (and a friend) back at CSME soon.

Sincerely,
CSME

TABLE OF CONTENTS

Page 1 - Welcome

Page 2 - 2023 Wrap Up

Page 3 - Student Spotlight

Page 4 - Affiliated Faculty

Page 5 - Events

Page 6 - Opportunities

Page 7 - Recommendations

Page 8 - Feedback/Donate

WHERE TO FIND US

Our main office is located in the Creative Arts building in room 127. Feel free to drop by anytime for a quiet place to study or to grab a snack between classes. You're always welcome at CSME.



CENTER FOR
SCIENCE &
MATHEMATICS
EDUCATION

2023 Wrap Up

FROM CSME

The Fall 2023 semester was a wonderful start to the school year for CSME. Before we completely say goodbye to 2023, we'd like to share some of the wonderful memories we made with our community!

September



CSME's Ice Cream Social

December



SF Math Circle Festival



CSME Book Giveaway

STUDENT SPOTLIGHT

Supplemental Instruction

Natalie Yam

"I'm Natalie (she/her/hers), and I'm a Computer Science major who is interested in going into machine learning. I also love helping the computer science community here at SF State in any way I can!"

What interested you in the Supplemental Instruction program?

"Before joining SI, I had been volunteer tutoring for Duc Ta, and he introduced me to the program. I have always loved helping my peers; it's the best way to truly understand what you are learning and, at the same time, help others. SI has allowed me to do both!"

What are some of the most memorable experiences you've had being a part of this program?

"During one of the weeks when we were going over pointers, my co-SI facilitator had a fun coding activity where everyone had to guess the outputs of the given code snippets. The students used the nametag whiteboards to hold up their answers. This was a fun and interactive session for not only the students but also for Huy and I."

How have you benefited or grown from this experience?

"I have benefited from this experience by learning more ways to explain different concepts in C++. SI has allowed me to gain new perspectives on what is confusing about various topics in C++, thus allowing me to cultivate explanations that suit a broader range of students and learners of C++."

What advice can you offer someone who wants to join this program?

"The advice I would offer someone who wants to join SI is that you should not let the idea of "not knowing enough" hold you back. You are not supposed to know everything; the beauty of SI is that it's not just about learning material for X class but more about developing the problem-solving and study skills to succeed in all your classes."



January 2024

AFFILIATED FACULTY



ANDREW STURNER PROFESSOR

Andrew began working as a Recruiting Specialist with the CSME in 2022. Previously a lecture faculty member in the SFSU Department of Physics and Astronomy, he is now a Project Manager with the LSST Discovery Alliance, a nonprofit aiming to accelerate astrophysical breakthroughs by focusing on inclusivity, scientific networks, and multi-disciplinary collaboration among users of the Rubin Observatory. His research interests include inclusivity and persistence in STEM and magnetospheric plasma physics.



EVRA BALDINGER ASSOCIATE DIRECTOR

Evra Baldinger came to San Francisco State in 2019. She is an Assistant Professor in the Department of Secondary Education with an emphasis in Mathematics Education. Her research interests are in equity and justice in education, teacher learning, and learning through discourse. She teaches graduate and credential courses in mathematics education and secondary education with a focus on creating inclusive and equitable classroom systems.

Ask CSME – Question and Answer



Do you have any questions about becoming a teacher? Just ask CSME! We'll be answering your anonymous questions right here, every month.

Follow this QR code or this link to ask us questions:

https://sfsu.co1.qualtrics.com/jfe/form/SV_eIBRYnVyjg8Afww



CSME EVENTS



CSME COFFEE CORNER

Curious about CSME? Interested in learning more about our programs? Want to know more about becoming a teacher?

Visit our CSME office in person and get your questions answered over a cup of tea and some snacks. We are here for you.

Stop by and receive free CSME swag.

When: In person every Wednesday

12 pm - 1 pm

Where: Creative Arts 127

Can't make it in person?

Join us online every Friday,

1 pm - 2 pm

Zoom ID: 829 3522 5159

Passcode: 0xSCjv

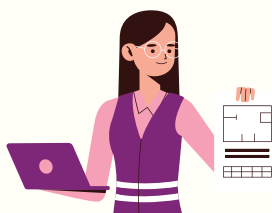
PART-TIME JOB FAIR

Attend the 2024 Spring SF State job fair.

When: Thursday, February 15th

12 pm – 3 pm

Where: Jack Adams Hall within the Cesar Chavez Student Center



TEACHER FELLOWS SPRING 2024 MEETING

Interested in learning more about the Teacher Fellows program? Attend a seminar and get more information.

When: 2/23, 3/15, 4/19, 5/10

4:30 pm - 6:30 pm

Where: Creative Arts 126

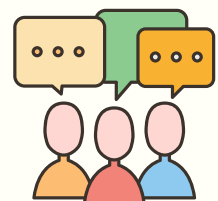
STAJES SPRING 2024 SEMINAR

Dear STAJES members, don't forget to attend your monthly seminars.

When: 2/2, 3/1, 4/5, 5/17

4 pm - 6 pm

Where: Creative Arts 126





OPPORTUNITIES

Scholarships

Teacher Fellows

Interested in becoming a K-12 STEM teacher and gaining support from a community of like-minded students who love science and math?

Consider joining Teacher Fellows and gain experience in the field while earning \$500 - \$1,500 a semester.

Visit our website to learn more about Teacher Fellows and consider applying to our program.

Support

Campus Resources

SF State has an abundance of on-campus resources for students, ranging from food/shelter support to equity support.

Visit the student resources website at studentresources.sfsu.edu/resources

If you're having trouble during this school year and need to talk to someone, visit CAPS (counseling and psychological services) <https://caps.sfsu.edu>

Find academic support at SF State's Tutoring and Academic Support Center (TASC). Visit their website at tutoring.sfsu.edu

Job Opportunities

SF Math Circle

Earn at least \$19/hour to work with small groups of elementary or middle school students as they explore interactive, hands-on puzzles and games.

To find out more information and to apply, visit sfmathcircle.org/facilitators

Supplemental Instruction

Applications are accepted on a rolling basis until all open positions are filled. Applicants will be contacted via email to set up follow-up interviews within a week or so after submitting their applications. Visit our website csme.sfsu.edu/SI to find an application.

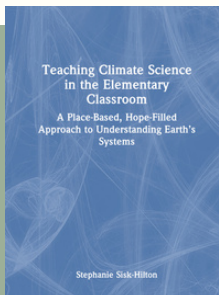


SF Math Circle Festival (12/3)

CSME'S MONTHLY BOOK LIST



We would like to share a selection of books and articles to help inform our community of ways we can be conscious of issues surrounding injustice while celebrating the different cultures and identities that make our community meaningful.



Teaching Climate Science in the Elementary Classroom

by Stephanie Sisk-Hilton (CSME affiliated faculty and professor in the elementary education department of GCoE)

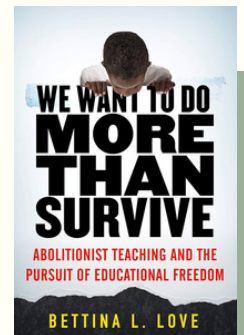
Discover new ways to help elementary students engage with and understand the world around them through place-based, hope-filled learning about the causes, impacts, and responses to climate change. This book features foundational climate concepts, easily implementable activity plans, and inspiring examples of student engagement. Each chapter begins with a short vignette pulled from the author's considerable teaching experience in engaging students in concepts of climate change and climate justice, followed by content-focused sections and recommendations for student activities and projects.

We Want to Do More than Survive: Abolitionist Teach and the Pursuit of Educational Freedom

by Bettina L. Love

To dismantle the educational survival complex and to achieve educational freedom—not merely reform—teachers, parents, and community leaders must approach education with the imagination, determination, boldness, and urgency of an abolitionist. Following in the tradition of activists like Ella Baker, Bayard Rustin, and Fannie Lou Hamer, We Want to Do More Than Survive introduces an alternative to traditional modes of educational reform and expands our ideas of civic engagement and intersectional justice.

Visit our office, CA 127, and pick up a free copy when the semester starts



Fill In the Blank

W_____d – The area of land that includes a particular river or lake and all the rivers, streams, etc., that flow into it

A_____d – A geographical area within which the air frequently is confined or channeled, with all parts of the area thus being subject to similar conditions of air pollution

N_____t s_____e – A source of pollution that issues from widely distributed or pervasive environmental elements

F__l c__l – A device that produces a continuous electric current directly from the oxidation of a fuel, as that of hydrogen by oxygen

PUZZLE CORNER



Got the answer? The first five people to visit our office, Creative Arts 127, with the correct answer will win a prize. The winners and the answers will be revealed in our next newsletter.

We Would Love to Hear from You!

Your support and input at CSME is important to us. Let us know if you have feedback you'd like to offer—suggestions for student/teacher spotlights, book recommendations, etc. Have a club you'd like to advertise? Let us know about it!

Feel free to leave comments through the QR code or link provided!
https://sfsu.co1.qualtrics.com/jfe/form/SV_74cHrE7WXY8imiO



Q&A

Got more questions about the Center or one of our programs? Fill out our Qualtrics survey and we'll get back to you ASAP.

Feel free to leave any questions through the QR code or link provided.
https://qfreeaccountssjc1.az1.qualtrics.com/jfe/form/SV_1YRXJxYRd5O9dNY



Keep Up With CSME News!

Subscribe to CSME's Mailing List and receive updates and announcements, including our monthly newsletters. Subscribe by clicking the link or scanning the QR code:
https://qfreeaccountssjc1.az1.qualtrics.com/jfe/form/SV_2s1liWxVkuEPqu2



Donate to CSME

If you'd like to help CSME continue to support equity on our campus and across the Bay Area, please consider a donation to our program. Visit our website at csme.sfsu.edu/donate, click the 'Support CSME' dropdown menu, and select donate.

If you're interested in discussing a donation, contact our director, Tendai Chitewere (tendai@sfsu.edu).

Thank you!

Follow Our Instagram

Keep up with CSME on our Instagram page at [@csme_sfsu](https://www.instagram.com/csme_sfsu)! Get information about our events, programs, and important CSME updates.



@csme_sfsu