


csme@sfsu.edu |  @csme_sfsu | 415-405-4190



Welcome to February



Happy Black History Month! At CSME we want to showcase all of the amazing Black STEM teachers and scholars who have passionately contributed their work to the STEM field. See page 3 to read more about a few of today's inspiring STEM leaders.

With the Spring semester underway and Supplemental Instruction back, we're so

excited to be seeing more students utilizing our spaces and wandering the halls again. Feel free to drop by our office in Creative Arts 127 and say hi, or pick up a snack and use our kitchen appliances. We're looking forward to supporting you all once again!

If you're looking for a place to study, why not visit CA 126, our dedicated study space? It's a large, quiet space equipped with whiteboards, plenty of desk space, and computer monitors. No need to reserve a spot, just grab your friends and your books, and settle in.

Cheers,
 CSME

TABLE OF CONTENTS

- Page 1** - Welcome
- Page 2** - Our Programs
- Page 3** - Black History Month
- Page 4** - Events
- Page 5** - Opportunities
- Page 6** - Recommendations
- Page 7** - Donate

WHERE TO FIND US

Our main office is located in the Creative Arts building in room 127. Feel free to drop by anytime for a quiet place to study or to grab a snack between classes. You're always welcome at CSME.



CENTER FOR
 SCIENCE &
 MATHEMATICS
 EDUCATION

OUR PROGRAMS

Learning Assistants

Want to help facilitate active learning in science courses? Well, look no further. Become a Learning Assistant and support other students in science courses and earn credits in a unique and fun way.

Noyce STAJES

STEM Teaching toward A Just and Equitable Society (STAJES) program is a National Science Foundation (NSF) funded program to provide scholarships to students who are committed to teaching science or mathematics in high-need school districts upon the completion of a single subject teacher credential program.

SF Math Circle

SF Math Circle works to make math accessible, inclusive, and fun for 2nd through 8th graders in after-school classes and camps. We offer compelling, low-floor, high-ceiling activities that make mathematical thinking accessible and fun for students from diverse backgrounds.



SF Math Circle

Supplemental Instruction

Take a fun one-unit SCI course to help study efficiently and effectively with your friends. Work in small groups on practice problems and activities to support learning in the parent STEM course with the help of two friendly undergrad facilitators.



STEM House

STEM HOUSE

Local elementary classrooms partner with SF State by bringing their students to campus for an inspirational college science experience, complete with lab coats and goggles. STEM HOUSE arranges for undergraduate future teachers to spend a semester doing paired teaching with small groups of students in grades 3 through 5.

Teacher Fellowship

Each year, CSME supports a cohort of STEM majors and credential students interested in being K-12 teachers. Teacher Fellows create a supportive community of aspiring teachers who gain experience in the field while earning their degrees. Teacher Fellows receive a stipend, extra mentoring, special seminars and access to a dedicated study center.

BLACK HISTORY

SPOTLIGHT

SYMONE BARKLEY

Symone Barkley is a scientist and educator, working in the marine science field. She passionately teaches about the ocean and environment and supports educators as the Chief Learning Officer for Black In Marine Science.



DR. WILLIAM RATCLIFF

Dr. William Ratcliff has been working on space physics and non linear optics since his high school internship all the way to Postdoc. He is a part of the American Physical Society and an Associate Editor for Science Advances.



DR. BEVERLY DANIEL TATUM

Dr. Beverly Daniel Tatum is the author of the best selling book, *Dr. Beverly Daniel Tatum, Why Are All the Black Kids Sitting Together in the Cafeteria*. She is an award-winning educational leader, bringing unique insights on effective action for social change



CSME EVENTS

CSME COFFEE CORNER

Curious about CSME? Interested in learning more about our programs? Want to know more about becoming a teacher?

Visit our CSME office in person and get your questions answered over a cup of tea and some snacks. We are here for you.

Stop by and receive free CSME swag.

When: Every Friday
12 pm - 1 pm

Where: Creative Arts 127



TEACHER FELLOWS SPRING 2025 MEETINGS

Interested in learning more about the Teacher Fellows program? Attend a seminar, get a tasty dinner, and meet other students who are exploring a teaching career. For more information, contact Arnold at arnoldkhampaseut@sfsu.edu.

When: 2/21, 3/14, 4/18
4:30 pm - 6:30 pm

Where: Creative Arts 126





OPPORTUNITIES

Scholarships

Teacher Fellows

Interested in becoming a K-12 STEM teacher and gaining support from a community of like-minded students who love science and math?

The Teacher Fellows Program is still accepting applications from students. Join Teacher Fellows and gain experience in the field while earning \$500 - \$1,500 a semester.

Visit our website to learn more about Teacher Fellows and consider applying to our program.

Opportunities

SF Math Circle

SF Math Circle is hiring for Summer 2025. Earn at least \$20/hour to work with small groups of elementary or middle school students as they explore interactive, hands-on puzzles and games.

To find out more information and to apply, visit sfmathcircle.org/facilitators

Learning Assistants

Apply to become a Learning Assistant today! If you're an undergrad passionate about chemistry, physics, astronomy, computer science, or math, Learning Assistants might be for you. Visit our website csme.sfsu.edu/learning-assistants or email Kim Coble (kcoble@sfsu.edu) to find out more information.

Free CSET Prep Class

SDSU offers FREE online CSET preparation classes that are open to the public- SDSU enrollment and San Diego residency are not required. They typically have Winter and Summer sessions, where they provide free materials and reimbursements for test fees (as long as the student pass the exam).

If you're interested, [sign this form](#).

Student Evaluation Proctor

Scientific Adventures for Girls is seeking 6 Student Evaluation Proctors to proctor end of the year survey evaluations to their TK-6th grade girls in elementary schools in Richmond and Oakland. Proctors will be paid \$21/hour. Visit their website for more information and how to apply at scientificadventures.org/student-evaluation-proctor-jd

Support

Campus Resources

SF State has an abundance of on-campus resources for students, ranging from food/shelter support to equity support.

Visit the student resources website at studentresources.sfsu.edu/resources

CAPS: If you're having trouble during this school year and need to talk to someone, visit CAPS (counseling and psychological services) <https://caps.sfsu.edu>

TASC: Find academic support at SF State's Tutoring and Academic Support Center (TASC). Visit their website at tutoring.sfsu.edu

Safety: If you're ever feeling unsafe around campus, call the police at (415) 338-7200 for an escort.

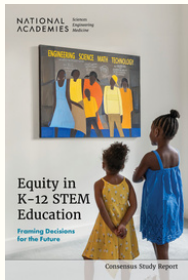
The SAFE Place: The SAFE Place is a survivor-focused, trauma-informed program that provides **FREE** and **CONFIDENTIAL** support services to survivors of sexual assault, intimate partner violence, stalking, and sexual harassment (sexual violence) while working with campus partners to end sexual violence. Visit their website at <https://dos.sfsu.edu/safeplace>

CSME'S MONTHLY BOOK LIST



We would like to share a selection of books and articles to help inform our community of ways we can be conscious of issues surrounding injustice and racism while celebrating the different cultures and identities that make our community rewarding and meaningful.

Stop by Creative Arts 127 and pick up something new to read.



Equity in K-12 STEM Education: Framing Decisions for the Future

by National Academies of Sciences, Engineering, and Medicine

Science, technology, engineering, and mathematics (STEM) live in the American imagination as promising tools for solving pressing global challenges and enhancing quality of life. Despite the importance of the STEM disciplines in the landscape of U.S. political, economic, and social priorities, STEM learning opportunities are unevenly distributed, and the experiences an individual has in STEM education are likely to vary tremendously based on their race, ethnicity, socio-economic class, gender, and a myriad of other factors.

Teaching Climate Change: Fostering Understanding, Resilience, and a Commitment to Justice

by Mark Windschitl

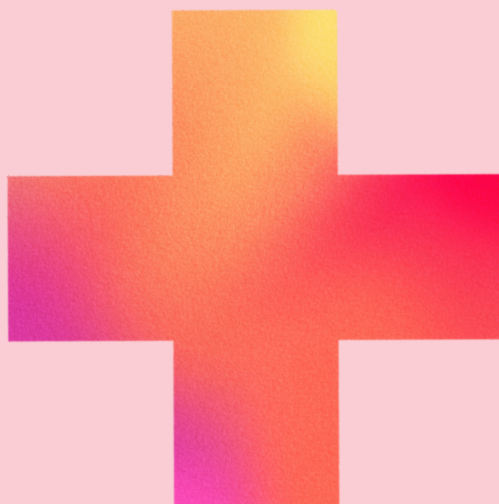
Teaching Climate Change lays out a comprehensive, NGSS-aligned approach to climate change education that builds in-depth knowledge of the subject, empowers students, and promotes a social justice mindset. Windschitl presents real-life classroom examples that illustrate not only key STEM concepts such as carbon cycles and the greenhouse effect, biodiversity, and sustainability, but also broader issues, including the countering of misinformation, decarbonizing solutions, the centering of human stories, and the advancement of equity and environmental justice.



PUZZLE CORNER

Here is an ordinary cross. You are allowed to make two straight cuts across it.

How do you cut it to make the most pieces?



Do you have an interest in puzzles like this and teaching kids? Join SF Math Circle and teach 2nd - 8th grade kids while gaining teaching experience. Visit our opportunities page and find out how to join.

Got the answer? The first five people to visit our office, Creative Arts 127, with the correct answer will win a prize. The winners and the answers will be revealed in our next newsletter.

January's answer: 6

We Would Love to Hear from You!

Your support and input at CSME is important to us. Let us know if you have feedback you'd like to offer—suggestions for student/teacher spotlights, book recommendations, etc. Have a club you'd like to advertise? Let us know about it!

Feel free to leave comments through the QR code or link provided!
https://sfsu.co1.qualtrics.com/jfe/form/SV_74cHrE7WXY8imiO



Q&A

Got more questions about the Center or one of our programs? Fill out our Qualtrics survey and we'll get back to you.

Feel free to leave any questions through the QR code or link provided. https://qfreeaccountssjc1.az1.qualtrics.com/jfe/form/SV_1YRXJxYRd5O9dNY



Keep Up With CSME News!

Subscribe to CSME's Mailing List and receive updates and announcements, including our monthly newsletters. Subscribe by clicking the link or scanning the QR code:
https://qfreeaccountssjc1.az1.qualtrics.com/jfe/form/SV_2s1liWxVkuEPqu2



Donate to CSME

If you'd like to help CSME continue to support equity in STEM education and teacher preparation on our campus and across the Bay Area, please consider a donation to our program. Visit our website at csme.sfsu.edu/donate, click the 'Support CSME' dropdown menu, and select donate.

If you're interested in discussing a donation, contact our director, Tendai Chitewere (tendai@sfsu.edu).

Thank you!

Follow Our Instagram

Keep up with CSME on our Instagram page at [@csme_sfsu](https://www.instagram.com/csme_sfsu)! Get information about our events, programs, and important CSME updates.



@csme_sfsu