

csme@sfsu.edu | @csme\_sfsu | 415-405-4190



# Welcome to February



A very warm, sunny welcome to the Spring 2024 semester! February has started with a lot of excitement at CSME, especially the presence of students back in the Creative Arts spaces.

If you haven't stopped by the office to say "hi" and pick up some snacks, visited the Terraces to study, or had a meeting in Studio 2, please do so! We are working hard to expand the reach of CSME and our programs. Our goal is dramatically increase the

number of students who benefit from all different programs we offer at CSME. Would you help us by spreading the word in your social circles? Bring your friends to a meeting or study together in the Terraces.

Our data show that taking a SCI class increases the grades for students in the parent class. Joining the Teacher Fellowship Program helps build experience for a teaching career, and just visiting CSME helps to create a sense of community for all of us! We look forward to seeing you and your friends! Happy February!

Cheers,  
 CSME

## TABLE OF CONTENTS

- Page 1** - Welcome
- Page 2** - Celebrate in February
- Page 3** - Black History Spotlight
- Page 4** - Affiliated Faculty
- Page 5** - Program Update
- Page 6** - Events
- Page 7** - Opportunities
- Page 8** - Recommendations
- Page 9** - Feedback/Donate

## WHERE TO FIND US

Our main office is located in the Creative Arts building in room 127. Feel free to drop by anytime for a quiet place to study or to grab a snack between classes. You're always welcome at CSME.



CENTER FOR  
 SCIENCE &  
 MATHEMATICS  
 EDUCATION

# Celebrate in February



February is a culturally rich month. Immerse yourself in new cultures and traditions by joining in on the festivities!



## Black History Month

February is Black History Month! Walk along CSME's hallway and read up on some influential Black figures who have shaped past and present STEAM and education. Also, join in on the Black History celebrations right on the SF State campus. The Africana Studies Department and the Black Faculty & Staff Association will be hosting a Chicken and Juice luncheon on February 21st in the Rosa Parks Room from 12:30 PM - 4 PM.



## Lunar New Year

Celebrate the 2024 Lunar New Year, the year of the dragon, on February 10th with family and friends. San Francisco's Chinatown hosts a New Year's parade on February 24th. There will be Chinese folk dancing, opera, and much more to see.



## Valentine's Day

Love is in the air and your brain! Release some dopamine with candy from CSME. Stop by and pick up some sweet treats on February 14th in Creative Arts 127.

# Black History Spotlight



To celebrate Black History Month, CSME would like to spotlight a few of many influential Black leaders who have made significant contributions to STEM and STEM education.



## Bob Moses

Bob Moses was a mathematics educator who created the Algebra Project in the 19890s. Along with the Mathematics Department, CSME was fortunate to have hosted Dr. Moses when he gave an inspiring talk at SF State a few years ago. His model of using mathematics as an organizing tool for quality education for all children in America continues to inform the work we do. As a Civil Rights Leader, he reminds us of the importance of our work for creating a just and equitable future.

---

## Katherine Johnson

Her story of being one of a team of Black women mathematicians in documented in the film: Hidden Figures. Katherine was awarded the Presidential Medal of Honor by President Obama in 2015. Check out the book or the DVD at the CSME library.



## Stephon Alexander

Stephon Alexander is a theoretical physicist and professor at Brown University who specializes in string theory and particle physics. He co-invented a model that helps to explain the early expansion of the universe, served as the scientific advisor on Ava DeVernay's A Wrinkle in Time, and currently serves as the President of the National Society of Black Physicists.

February 2024

# AFFILIATED FACULTY



## ADITI GROSSMAN FACULTY

Since 2018, Aditi has been teaching mathematics to first-year students at SF State. A graduate of SF State, her teaching repertoire expanded to include Economics and Computer Science courses more recently. In addition, she serves as the project manager for the initiative titled "Expanding Equity and Access in Discrete Mathematics." This project is particularly meaningful to her as it resonates with her unwavering commitment to fostering inclusivity and accessibility in education.



## HAO YUE FACULTY

Hao came to SF State in 2015. He is now an Associate Professor in the Computer Science Department. His work focuses on K-12 CS education, including K-12 CS teacher preparation and professional development, curriculum development, and the development and implementation of CS supplementary authorization program. He is currently the Principal Investigator for CS4All, which supports professional development for computer science teaching in high schools.

# PROGRAM UPDATE



SF Math Circle will offer Math Circle classes at SF State and at:

- Jose Ortega Elementary School
- Rooftop School
- Sanchez Elementary School
- Sheridan Elementary School
- Willie L. Brown Jr. Middle School

Registration for Math Circle classes at SF State is open, and there are still a few spaces available. For more information and to register, visit SF Math Circle.

<https://www.sfmathcircle.org/sf-state>

## SF MATH CIRCLE: UPDATE

The SF Math Circle program has been making many strides to support professional development at Jose Ortega Elementary School, Sanchez Elementary School, and Sheridan Elementary School by providing Math Circle-centered professional development for teachers and staff at these schools.



## BECOME A FACILITATOR!

Applications for Summer and Fall 2024 will open in April. For more information on being a facilitator, visit the SF Math Circle website.

<https://www.sfmathcircle.org/facilitators>

# CSME EVENTS



## CSME COFFEE CORNER

Curious about CSME? Interested in learning more about our programs? Want to know more about becoming a teacher?

Visit our CSME office in person and get your questions answered over a cup of tea and some snacks. We are here for you.

Stop by and receive free CSME swag.

**When:** In person every Tuesday

12 pm - 1 pm

**Where:** Creative Arts 127

### Can't make it in person?

Join us online every Friday,

1 pm - 2 pm

**Zoom ID:** 829 3522 5159

**Passcode:** 0xSCjv

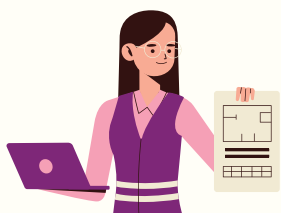
## PART-TIME JOB FAIR

Attend the 2024 Spring SF State job fair.

**When:** Thursday, February 15th

12 pm – 3 pm

**Where:** Jack Adams Hall within the Cesar Chavez Student Center



## TEACHER FELLOWS SPRING 2024 MEETING

Interested in learning more about the Teacher Fellows program? Attend a seminar, get a tasty dinner, and meet other students who are exploring a teaching career. For more information, contact Arnold at [arnoldkhampaseut@sfsu.edu](mailto:arnoldkhampaseut@sfsu.edu).

**When:** 2/23, 3/15, 4/19, 5/10

4:30 pm - 6:30 pm

**Where:** Creative Arts 127

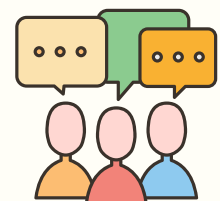
## STAJES SPRING 2024 SEMINAR

Dear STAJES members, don't forget to attend your monthly seminars.

**When:** 3/1, 4/5, 5/17

4 pm - 6 pm

**Where:** Creative Arts 126





# OPPORTUNITIES

## Scholarships

### Latinos in Technology Scholarship

Latinos in Technology offers scholarships of up to \$6,000/year (renewable for up to 3 years) to rising junior and senior undergraduate Latino students who have declared a major in a STEM-related field. Applications are due February 29th, 2024 at noon.

Apply here:

<https://www.siliconvalleycf.org/scholarships/latinos-in-technology-scholarship>

### Teacher Fellows

Interested in becoming a K-12 STEM teacher and gaining support from a community of like-minded students who love science and math?

Consider joining Teacher Fellows and gain experience in the field while earning \$500 - \$1,500 a semester.

Visit our website to learn more about Teacher Fellows and consider applying to our program.



SF Math Circle Festival

## Support

### Campus Resources

SF State has an abundance of on-campus resources for students, ranging from food/shelter support to equity support.

Visit the student resources website at [studentresources.sfsu.edu/resources](http://studentresources.sfsu.edu/resources)

If you're having trouble during this school year and need to talk to someone, visit CAPS (counseling and psychological services) <https://caps.sfsu.edu>

Find academic support at SF State's Tutoring and Academic Support Center (TASC). Visit their website at [tutoring.sfsu.edu](http://tutoring.sfsu.edu)

## Job Opportunities

### SF Math Circle

Earn at least \$19/hour to work with small groups of elementary or middle school students as they explore interactive, hands-on puzzles and games. To find out more information and to apply, visit [sfmathcircle.org/facilitators](http://sfmathcircle.org/facilitators)

### Supplemental Instruction

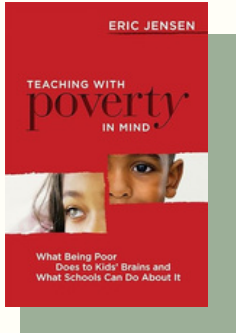
Applications to be a facilitator are accepted on a rolling basis until all open positions are filled. Applicants will be contacted via email to set up follow-up interviews within a week or so after submitting their applications. Visit our website [csme.sfsu.edu/SI](http://csme.sfsu.edu/SI) to find an application.

# CSME'S MONTHLY BOOK LIST



We would like to share a selection of books and articles to help inform our community of ways we can be conscious of issues surrounding injustice and racism while celebrating the different cultures and identities that make our community rewarding and meaningful.

CSME is now giving away free STEM education, math, science, and social justice books year-round! Stop by Creative Arts 127 and pick up something new to read.



## Teaching With Poverty in Mind: What Being Poor Does to Kids' Brains and What Schools Can Do About It

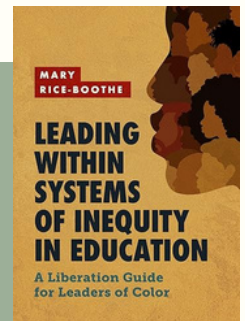
by Eric Jensen

In Teaching with Poverty in Mind: What Being Poor Does to Kids' Brains and What Schools Can Do About It, veteran educator and brain expert Eric Jensen takes an unflinching look at how poverty hurts children, families, and communities across the United States and demonstrates how schools can improve the academic achievement and life readiness of economically disadvantaged students.

## Leading Within Systems of Inequity in Education: A Liberation Guide for Leaders of Color

by Mary Rice-Boothe

As a leader of color, what do you need to succeed in the systems that often have marginalized the populations you represent? What skills and support will help you to replace these existing systems with new ones that will better serve today's students? You will learn from the experiences and insights of equity officers and principals in districts of all sizes and explore key takeaways, reflection questions, and additional resources. Both inspiring and practical, Leading Within Systems of Inequity in Education is an indispensable liberation guide for overcoming obstacles and creating the path to genuine equity in schools.



Enter numbers in each row and column to arrive at the end totals. Only numbers 1 through 9 are used, and each only once.

	-		+		=	6
-		+		-		
	+		-		=	14
+		-		+		
	-		+		=	5
=		=		=		
9		10		4		

## PUZZLE CORNER

Do you have an interest in puzzles like this and teaching kids? Join SF Math Circle and teach 2nd - 8th grade kids while gaining teaching experience. Visit our opportunities page (9) and find out how to join.

Got the answer? The first five people to visit our office, Creative Arts 127, with the correct answer will win a prize. The winners and the answers will be revealed in our next newsletter.



## We Would Love to Hear from You!

Your support and input at CSME is important to us. Let us know if you have feedback you'd like to offer—suggestions for student/teacher spotlights, book recommendations, etc. Have a club you'd like to advertise? Let us know about it!

Feel free to leave comments through the QR code or link provided!  
[https://sfsu.co1.qualtrics.com/jfe/form/SV\\_74cHrE7WXY8imiO](https://sfsu.co1.qualtrics.com/jfe/form/SV_74cHrE7WXY8imiO)



## Q&A

Got more questions about the Center or one of our programs? Fill out our Qualtrics survey and we'll get back to you ASAP.

Feel free to leave any questions through the QR code or link provided.  
[https://qfreeaccountssjc1.az1.qualtrics.com/jfe/form/SV\\_1YRXJxYRd5O9dNY](https://qfreeaccountssjc1.az1.qualtrics.com/jfe/form/SV_1YRXJxYRd5O9dNY)



## Keep Up With CSME News!

Subscribe to CSME's Mailing List and receive updates and announcements, including our monthly newsletters. Subscribe by clicking the link or scanning the QR code:  
[https://qfreeaccountssjc1.az1.qualtrics.com/jfe/form/SV\\_2s1liWxVkuEPqu2](https://qfreeaccountssjc1.az1.qualtrics.com/jfe/form/SV_2s1liWxVkuEPqu2)



## Donate to CSME

If you'd like to help CSME continue to support equity on our campus and across the Bay Area, please consider a donation to our program. Visit our website at [csme.sfsu.edu/donate](https://csme.sfsu.edu/donate), click the 'Support CSME' dropdown menu, and select donate.

If you're interested in discussing a donation, contact our director, Tendai Chitewere ([tendai@sfsu.edu](mailto:tendai@sfsu.edu)).

Thank you!

## Follow Our Instagram

Keep up with CSME on our Instagram page at [@csme\\_sfsu](https://www.instagram.com/csme_sfsu)! Get information about our events, programs, and important CSME updates.



@csme\_sfsu