


csme@sfsu.edu |  @csme_sfsu | 415-405-4190



Welcome to December



Happy Holidays!

All of us at CSME hope the 2023 year and semester are ending well for you. Take time to care for yourself during the last few weeks of the semester; a walk in nature can help reduce stress. With finals quickly approaching, we invite you to take advantage of CSME’s quiet study spaces in CA 126 or stop by CA 127 for a coffee break and some snacks.

Need an alternative gift for the holiday? A way to go green this holiday season is to give the gift of a recycled STEM book! This month CSME is hosting a book giveaway. Visit the 'Events' page (8) to learn where and when it will be held. There will be lots of free books, cookies, and warm apple cider.

And, as always, we are excited to introduce you to this month’s student spotlights: Alisa Yu and Maya Owens! Learn more about their journey with CSME on pages 3-6.

Good luck with all your finals!
 CSME

TABLE OF CONTENTS

- Page 1** - Welcome
- Page 2** - Website Navigation
- Page 3 - 6** - Student Spotlight
- Page 7** - Affiliated Faculty
- Page 8** - Events
- Page 9** - Opportunities
- Page 10** - Recommendations
- Page 11** - Feedback/Donate

WHERE TO FIND US

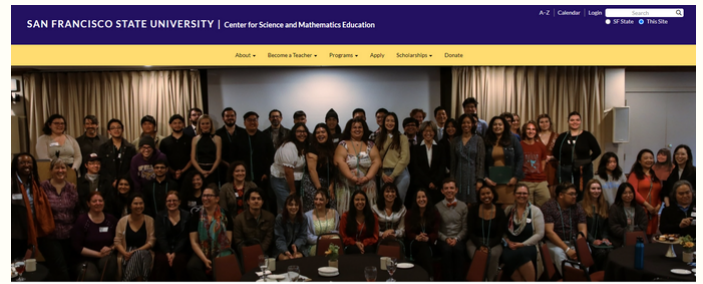
Our main office is located in the Creative Arts building in room 127. Feel free to drop by anytime for a quiet place to study or to grab a snack between classes. You're always welcome at CSME.



CENTER FOR
**SCIENCE &
 MATHEMATICS
 EDUCATION**

NAVIGATING THE CSME WEBSITE

WWW.CSME.SFSU.EDU



Welcome to CSME

The Center for Science and Mathematics Education is for all SFSU students interested in becoming a STEM based educator. Here

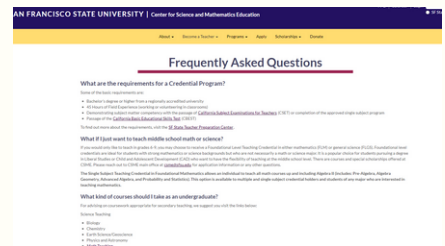
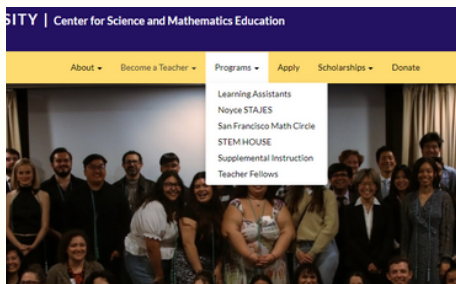


HOME PAGE

On the home page, you will find everything CSME has to offer. There is a current link to our newsletter, fliers, and directions on how to get to our office.

PROGRAM PAGE

All of CSME's programs are listed under 'Programs'. Learn more about each program, open applications, or get in touch with program directors.



BECOME A TEACHER

Visit the 'Becoming a Teacher' tab at the top of our webpage for a FAQs, teacher resources, and a test prep guide.

STEM RESOURCE LIBRARY

CSME has an abundance of resources to offer students. Visit the 'About' tab and select 'STEM Resource Library' to discover how you can get access to textbooks and school supplies.



STUDENT SPOTLIGHT

Supplemental Instruction



Alisa Yu

“Hi, my name is Alisa Yu, and I am a 4th year Biochemistry student from Santa Rosa, California. I am graduating in the Spring of 2024, and I am really excited about this milestone! I’ve been a SCI facilitator for Biology at the Center for Science and Math Education for the past two years and am very passionate about helping other students understand new biological course material. Outside of SFSU, I enjoy the beach, movies, and exploring new towns and restaurants. Spending my time outdoors with family and friends helps keep balance in my life during the school semester.”

What interested you in the Supplemental Instruction program?

“In 2021, I took BIOL 230, a large lecture class, and heard about a one-unit help course that better supports your learning in the parent STEM course.

It fit into my schedule and decided this class would only benefit me. After taking SCI 230, it completely helped me understand bigger concepts because I didn’t feel afraid to speak up and ask questions. It was interesting to me that the SCI classes are run by students who have previously taken the course; it gave me a sense of comfort. I applied to become a facilitator after this and thought it was a great opportunity to meet other STEM students and continue the cycle of helping future SCI students. At the time I became a facilitator I was still a sophomore, so my first SCI course impacted me and my college learning a lot, specifically it helped me become more comfortable with public speaking and tackle challenging problems. I went on to teach the SCI course for BIOL 230 after that with the same facilitator who taught the first SCI course I was ever in! We are still great friends now.”



CSME Staff Spotlight



Arnold Khampaseut Program Coordinator

Arnold was born and raised in the Bay Area. He graduated from UC Merced with an Applied Mathematics degree. Some of his hobbies include watching anime, listening to music, and learning K-pop choreography.

Before CSME, Arnold was a Data Analytics apprentice at COOP Careers and worked with K-3 students to help improve their literacy skills. He recently joined SF State in October of 2023 and is looking forward to working with CSME.

What are some of the most memorable experiences you've had being a part of this program?

“Being able a part of the close community of SCI facilitators and continuing to see previous students around campus have been some memorable times of being in this program. I have made great friends with the other facilitators in the program and have learned a lot about the way they run their own SCI class and have applied it to my own! Hearing how helpful and beneficial my SCI class was for these students’ lecture courses and exams at the end of the semester is rewarding to hear. It has been fun to chat with those students and hear that we were able to successfully give them a space to understand the concepts deeper, which is what I experienced as a student taking SCI for the first time.

After every semester, I have always been able to improve the way I run the SCI class and the lesson plan we share with students. I’ve even started having an end-of-the-semester party to celebrate the students and to have them unwind around final exams. Always improving and looking forward to meeting my SCI class and co-facilitator is why the SCI program has been so fun and memorable for me.”

How have you benefited or grown from this experience?

“I’ve grown and benefited a lot from teaching SCI, especially from my personal experiences of the wonderful people I was able to meet every semester. Early on, I had to learn to communicate and lead in situations I’ve never been in, which has pushed me to become a better student and peer to others. Other opportunities outside of the SCI program were opening up for me because of the leadership, organization, and community involvement this job has given me in the past two years! I was able to feel more confident when navigating situations as the leader and it has given me this sense of accomplishment. I enjoy and love what I’ve been doing with this program and have benefited greatly from it as an individual and student at SFSU.”

What advice can you offer someone who wants to join this program?

“This program is so amazing and impactful, even if you do join for a semester. The idea that previous students who have taken a STEM course get to have the opportunity to support new students gives a different level of perspective and understanding to these students. Don’t be afraid to join the SCI program and try something new! Just like them, you are a student as well and all you want to do is do your best to support them, so don’t be afraid to be transparent about that!

My experience with SCI and everyone from CSME has always been welcoming, kind, and helpful. Facilitators are able to have a creative outlet to come up with a lesson plan that helps accommodate students on what would help them thrive in the parent course. It’s a great experience to meet students with different backgrounds and majors, and a welcoming space where transparent communication is valued! Every semester has always been different and will inspire you to continue growing!”

STUDENT SPOTLIGHT

A photograph of Maya Owens, a young Black woman, smiling and wearing a purple graduation cap and gown with a gold stole. She is holding a gold balloon. A semi-transparent green box with the text 'Teacher Fellow' is overlaid on the left side of the image.

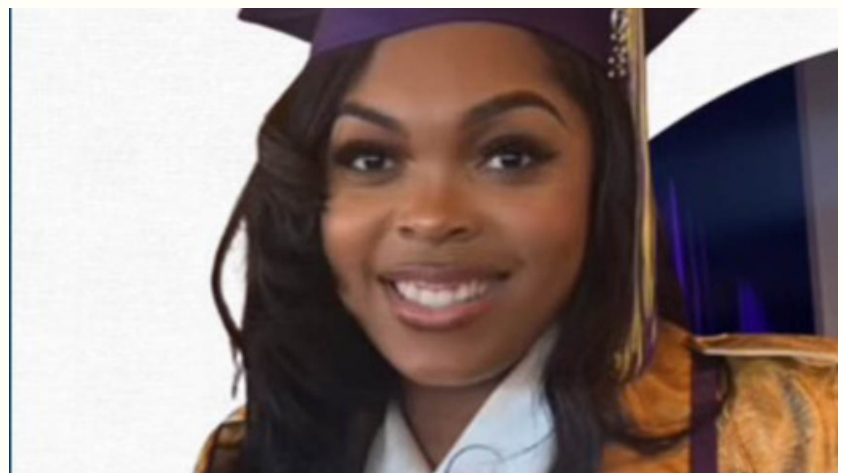
Teacher Fellow

Maya Owens

“Hi, my name is Maya Owens (she/her/hers), and I've recently earned a Bachelor's Degree in Mathematics Education at San Francisco State University. Postgrad, I've been studying to earn a teaching credential while student teaching at a high-needs secondary school. Eventually, I aspire to assume the role of a principal. Since I was twelve years old, I've had a passion for math and knew I wanted to be an educator. As an African-American woman and a first-generation student, I hope to inspire other students of color and women to pursue careers in the STEM field where it's mostly male-dominated.”

What interested you in the Supplemental Instruction program?

“I was encouraged by my amazing professor, Kim Seashore, to apply to the Teacher Fellows Program because I was pursuing a career in mathematics with a focus in teaching.”



CSME Staff Spotlight



David Klein SF Math Circle Director

After getting his undergraduate degree from UC Berkeley, David enrolled in the graduate Math program at SF State in 2012. It was at SF State that he first encountered the San Francisco Math Circle.

SF Math Circle's focus on making math engaging and fun by emphasizing creative exploration and problem solving really resonated with David. He has been an instructor with the SF Math Circle since 2013, and took on a larger administrative role as the Associate Director of the organization in 2019.

What are some of the most memorable experiences you've had being a part of this program?

"The fact that the program was so community-based and helpful. There were so many opportunities for learning, studying, and networking. We would have weekly study sessions with some of the grad students who were pursuing a higher degree in mathematics and were always eager to help us. I met some lifelong friends being a part of the Teacher Fellows program. I give credit to the community within CSME for helping me earn my Bachelor's Degree in Math. I wouldn't have been able to do it without them."

How have you benefited or grown from this experience?

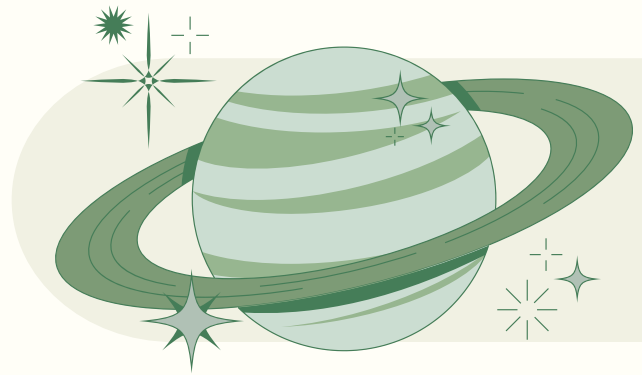
"I have learned that teamwork really does make the dream work. I have gained so much knowledge that has helped me understand my students when it comes to mathematical concepts and multiple ways of thinking. I have been enrolled in 3 college institutions, none of which hold the kind of community that SFSU's CSME organization has. I am grateful for the support (emotional & financial 😊) and friendships that I've gained from being a part of this organization."

What advice can you offer someone who wants to join this program?

"Just try it and see! Get involved in Teacher Fellows if you're studying to be a teacher. Get to know the people who are involved in the program and ask LOTS of questions. If you are a STEM major, JUST DO IT. This program is not only community based but it also provides many financial opportunities for those who can benefit from it. "

December 2023

AFFILIATED FACULTY



DR. ADRIENNE COOL PROFESSOR

Adrienne has been teaching astronomy classes at SF State ever since 1996, using space-borne observatories to study ancient star clusters in the Milky Way with her students. She has directed the SF State planetarium and Observatory facilities and, with CSME's support, has been working on improving the pathway to K-12 teaching physics and astronomy students.



DR. KIM COBLE PROFESSOR

Kim is a professor of Physics and Astronomy at SF State with expertise in physics and astronomy education researched extensive experience teaching reformed introductory physics and astronomy classes. At SF State she is the director of the Learning Assistant program, a member of the Faculty Agents of Change, and a faculty collaborator for the Center for Science and Math Education.

December's Geminid Meteor Shower



Catch the annual Geminid meteor shower at its peak during December 13th and 14th! It will be at its brightest at 2 AM and you'll see at least 120 meteors per hour.



CSME EVENTS



CSME COFFEE CORNER

Curious about CSME? Interested in learning more about our programs? Want to know more about becoming a teacher?

Visit our CSME office in person and get your questions answered over a cup of tea and some snacks. We are here for you.

Stop by and receive free CSME swag.

When: In person every Wednesday

12 pm - 1 pm

Where: Creative Arts 127

Can't make it in person?

Join us online every Friday,

1 pm - 2 pm

Zoom ID: 829 3522 5159

Passcode: 0xSCjv

CSME BOOK GIVEAWAY

CSME is hosting an end-of-semester book giveaway. Find new STEM education, anti-racism, and math books while cozying up with some hot chocolate, and discover what CSME has to offer.

When: December 12th - 14th, 2023

12 PM - 4 PM

Where: Creative Arts 126



TEACHER FELLOWS FALL 2023 MEETING

Interested in learning more about the Teacher Fellows program? Attend a seminar and get more information.

When: December 8th, 2023

4 pm - 6 pm

Where: Creative Arts 127

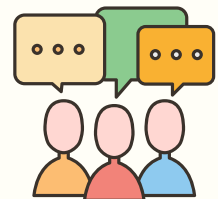
STAJES FALL 2023 SEMINAR

Dear STAJES members, don't forget to attend the last monthly seminar of the semester.

When: December 15th, 2023

4 pm - 6 pm

Where: Creative Arts 126





OPPORTUNITIES

Scholarships

Teacher Fellows

Interested in becoming a K-12 STEM teacher and gaining support from a community of like-minded students who love science and math?

Consider joining Teacher Fellows and gain experience in the field while earning \$500 - \$1,500 a semester.

Visit our website to learn more about Teacher Fellows and consider applying to our program.

Support

Campus Resources

SF State has an abundance of on-campus resources for students, ranging from food/shelter support to equity support.

Visit the student resources website at studentresources.sfsu.edu/resources

If you're having trouble during this school year and need to talk to someone, visit CAPS (counseling and psychological services) <https://caps.sfsu.edu>

Find academic support at SF State's Tutoring and Academic Support Center (TASC). Visit their website at tutoring.sfsu.edu

Job Opportunities

SF Math Circle

Earn at least \$19/hour to work with small groups of elementary or middle school students as they explore interactive, hands-on puzzles and games.

To find out more information and to apply, visit sfmathcircle.org/facilitators

Supplemental Instruction

Applications are accepted on a rolling basis until all open positions are filled. Applicants will be contacted via email to set up follow-up interviews within a week or so after submitting their applications. Visit our website csme.sfsu.edu/SI to find an application.

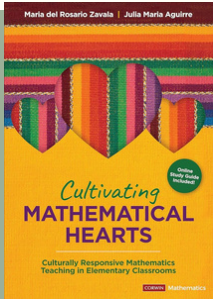


SF Math Circle Festival (12/3)

CSME'S MONTHLY BOOK LIST



We would like to share a selection of books and articles to help inform our community of ways we can be conscious of issues surrounding injustice while celebrating the different cultures and identities that make our community meaningful.



Cultivating Mathematical Hearts: Culturally Responsive Mathematics Teaching in Elementary Classrooms

by Maria Zavala & Julia Aguirre

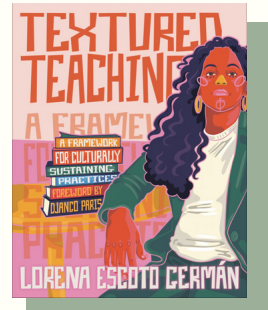
Cultivating Mathematical Hearts: Culturally Responsive Mathematics Teaching in Elementary Classrooms aims to re-center mathematics as a humanizing endeavor because putting children and their humanity at the heart of mathematics education can result in more engaged, meaningful, and joyful learning.

Visit CA 127 to borrow a copy of this book.

Textured Teaching: A Framework for Culturally Sustaining Practices

by Lorena Escoto German

With Culturally Sustaining Practice as its foundation, Textured Teaching helps secondary teachers in any school setting stop wondering and guessing how to implement teaching and learning that leads to social justice. Lorena shares her framework for creating a classroom environment that is highly rigorous and engaging, and that reflects the core traits of Textured Teaching: student-driven, community-centered, interdisciplinary, experiential, and flexible.



PUZZLE CORNER

My twin lives at the reverse of my house number. The difference between our house numbers ends in two. What are the lowest possible numbers of our house numbers?

Got the answer? The first five people to visit our office, Creative Arts 127, with the correct answer will win a prize. The winners and the answers will be revealed in our next newsletter.



Do you have an interest in puzzles like this and teaching kids? Join SF Math Circle and teach 2nd - 8th grade kids while gaining teaching experience. Visit our opportunities page (9) and find out how to join.

We Would Love to Hear from You!

Your support and input at CSME is important to us. Let us know if you have feedback you'd like to offer—suggestions for student/teacher spotlights, book recommendations, etc. Have a club you'd like to advertise? Let us know about it!

Feel free to leave comments through the QR code or link provided!
https://sfsu.co1.qualtrics.com/jfe/form/SV_74cHrE7WXY8imiO



Q&A

Got more questions about the Center or one of our programs? Fill out our Qualtrics survey and we'll get back to you ASAP.

Feel free to leave any questions through the QR code or link provided.
https://qfreeaccountssjc1.az1.qualtrics.com/jfe/form/SV_1YRXJxYRd5O9dNY



Keep Up With CSME News!

Subscribe to CSME's Mailing List and receive updates and announcements, including our monthly newsletters. Subscribe by clicking the link or scanning the QR code:
https://qfreeaccountssjc1.az1.qualtrics.com/jfe/form/SV_2s1liWxVkuEPqu2



Donate to CSME

If you'd like to help CSME continue to support equity on our campus and across the Bay Area, please consider a donation to our program. Visit our website at csme.sfsu.edu/donate, click the 'Support CSME' dropdown menu, and select donate.

If you're interested in discussing a donation, contact our director, Tendai Chitewere (tendai@sfsu.edu).

Thank you!

Follow Our Instagram

Keep up with CSME on our Instagram page at [@csme_sfsu](https://www.instagram.com/csme_sfsu)! Get information about our events, programs, and important CSME updates.



@csme_sfsu