
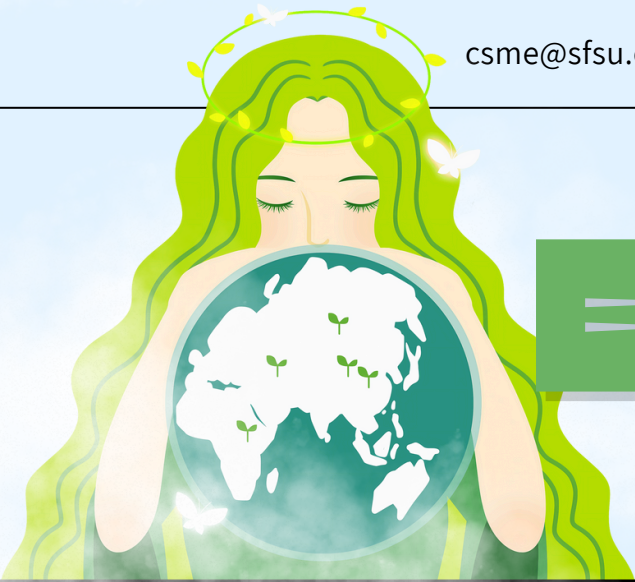


csme@sfsu.edu |  @csme\_sfsu | 415-405-4190

# Earth Day

## April 22nd

## Welcome to April



We hope your midterms were a success and your spring break was restful! Even though we are back from break, please remember to continue taking care of yourself. Our office will be opening again from 9 am - 4 pm. Please feel free to stop by and pick up some snacks or drinks to help yourselves refuel.

Last month, we celebrated Pi day with our Teacher Fellows. Check out page 3 to see some of the delicious homemade pies.

And, do not worry if you missed out on the festivities because CSME is hosting our annual banquet in May! Be on the lookout for RSVP invites sometime this month. We would like to celebrate our students and their fantastic achievements this year. We are so excited to celebrate with you all!

Cheers,  
CSME

## TABLE OF CONTENTS

- Page 1** - Welcome
- Page 2** - Our Programs
- Page 3** - Program Updates
- Page 4** - Events
- Page 5** - Opportunities
- Page 6** - Summer Institute
- Page 7** - Recommendations
- Page 8** - Donate

## WHERE TO FIND US

Our main office is located in the Creative Arts building in room 127. Feel free to drop by anytime for a quiet place to study or to grab a snack between classes. You're always welcome at CSME.



CENTER FOR  
SCIENCE &  
MATHEMATICS  
EDUCATION

### Learning Assistants

Want to help facilitate active learning in science courses? Well, look no further. Become a Learning Assistant and support other students in science courses and earn credits in a unique and fun way.

### Noyce STAJES

STEM Teaching toward A Just and Equitable Society (STAJES) program is a National Science Foundation (NSF) funded program to provide scholarships to students who are committed to teaching science or mathematics in high-need school districts upon the completion of a single subject teacher credential program.

### SF Math Circle

SF Math Circle works to make math accessible, inclusive, and fun for 2nd through 8th graders in after-school classes and camps. We offer compelling, low-floor, high-ceiling activities that make mathematical thinking accessible and fun for students from diverse backgrounds.

### Teacher Fellowship

Each year, CSME supports a cohort of STEM majors and credential students interested in being K-12 teachers. Teacher Fellows create a supportive community of aspiring teachers who gain experience in the field while earning their degrees. Teacher Fellows receive a stipend, extra mentoring, special seminars and access to a dedicated study center.

### Supplemental Instruction

Take a fun one-unit SCI course to help study efficiently and effectively with your friends. Work in small groups on practice problems and activities to support learning in the parent STEM course with the help of two friendly undergrad facilitators.



STEM House

### STEM HOUSE

Local elementary classrooms partner with SF State by bringing their students to campus for an inspirational college science experience, complete with lab coats and goggles. STEM HOUSE arranges for undergraduate future teachers to spend a semester doing paired teaching with small groups of students in grades 3 through 5.

### STEPS

STEPS offers tutoring in STEM courses to community college students and community members. STEPS is designed to support CSME students in providing positive, encouraging, and effective tutoring in STEM courses.





# CSME PROGRAM UPDATES

## 3/14 PI DAY!

This month we celebrated Pi Day during one of our Teacher Fellowship seminars with homemade pies!



**THANK YOU FOR  
JOINING US!**

## SF MATH CIRCLE

The Math Festival hosted by SF Math Circle on 3/15 saw over 60 students and family members!

SF Math Circle also supported a Math Night at Hillcrest Elementary on 3/19.



# CSME EVENTS

## CSME ANNUAL BANQUET

Be on the lookout for an invitation to CSME's annual banquet where we will be celebrating the accomplishments of our students.

**When:** Fri, May 9th  
4 PM - 7 PM

**Where:** Seven Hills Conference Center  
800 Font Blvd  
San Francisco, CA 94132



## TEACHER FELLOWS SPRING 2025 MEETINGS

Interested in learning more about the Teacher Fellows program? Attend a seminar, get a tasty dinner, and meet other students who are exploring a teaching career. For more information, contact Arnold at [arnoldkhampaseut@sfsu.edu](mailto:arnoldkhampaseut@sfsu.edu).

**When:** 4/11  
4:30 pm - 6:30 pm

**Where:** Creative Arts 126

## CSME COFFEE CORNER

Curious about CSME? Interested in learning more about our programs? Want to know more about becoming a teacher?

Visit our CSME office in person and get your questions answered over a cup of tea and some snacks. We are here for you.

Stop by and receive free CSME swag.

**When:** Every Friday  
12 pm - 1 pm

**Where:** Creative Arts 127





# OPPORTUNITIES

## Scholarships

### Teacher Fellows

Interested in becoming a K-12 STEM teacher and gaining support from a community of like-minded students who love science and math?

The Teacher Fellows Program is still accepting applications from students. Join Teacher Fellows and gain experience in the field while earning \$500 - \$1,500 a semester.

Visit our website to learn more about Teacher Fellows and consider applying to our program.

## Opportunities

### SF Math Circle

SF Math Circle is hiring for Summer 2025. Earn at least \$20/hour to work with small groups of elementary or middle school students as they explore interactive, hands-on puzzles and games.

To find out more information and to apply, visit [sfmathcircle.org/facilitators](https://sfmathcircle.org/facilitators)

### Learning Assistants

Apply to become a Learning Assistant today! If you're an undergrad passionate about chemistry, physics, astronomy, computer science, or math, Learning Assistants might be for you. Visit our website [csme.sfsu.edu/learning-assistants](https://csme.sfsu.edu/learning-assistants) or email Kim Coble ([kcoble@sfsu.edu](mailto:kcoble@sfsu.edu)) to find out more information.

### Free CSET Prep Class

SDSU offers FREE online CSET preparation classes that are open to the public- SDSU enrollment and San Diego residency are not required. They typically have Winter and Summer sessions, where they provide free materials and reimbursements for test fees (as long as the student pass the exam).

If you're interested, [sign this form](#).

### Student Evaluation Proctor

Scientific Adventures for Girls is seeking 6 Student Evaluation Proctors to proctor end of the year survey evaluations to their TK-6th grade girls in elementary schools in Richmond and Oakland. Proctors will be paid \$21/hour. Visit their website for more information and how to apply at [scientificadventures.org/student-evaluation-proctor-jd](https://scientificadventures.org/student-evaluation-proctor-jd)

## Support

### Campus Resources

SF State has an abundance of on-campus resources for students, ranging from food/shelter support to equity support.

Visit the student resources website at [studentresources.sfsu.edu/resources](https://studentresources.sfsu.edu/resources)

**CAPS:** If you're having trouble during this school year and need to talk to someone, visit CAPS (counseling and psychological services) <https://caps.sfsu.edu>

**TASC:** Find academic support at SF State's Tutoring and Academic Support Center (TASC). Visit their website at [tutoring.sfsu.edu](https://tutoring.sfsu.edu)

**Safety:** If you're ever feeling unsafe around campus, call the police at (415) 338-7200 for an escort.

**The SAFE Place:** The SAFE Place is a survivor-focused, trauma-informed program that provides **FREE** and **CONFIDENTIAL** support services to survivors of sexual assault, intimate partner violence, stalking, and sexual harassment (sexual violence) while working with campus partners to end sexual violence. Visit their website at <https://dos.sfsu.edu/safeplace>



# Data Science Summer in the City

## A STEM Summer Institute for Elementary Teachers

In-person on the San Francisco State University main campus

**June 9 | 10 | 11 | 12**  
plus 8 hours of online follow-up

Engage in place-based STEM experiences to bring climate justice education to your classroom

Learn strategies for integrating data science across your curriculum

Develop a network of colleagues committed to justice-based STEM education

Lunch is provided and completion of the institute includes a \$2,000 stipend



SAN FRANCISCO  
STATE UNIVERSITY

[bit.ly/DataScienceSummerApplication](https://bit.ly/DataScienceSummerApplication)

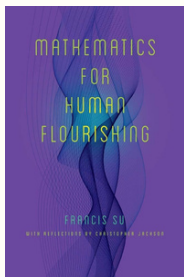


# CSME'S MONTHLY BOOK LIST



We would like to share a selection of books and articles to help inform our community of ways we can be conscious of issues surrounding injustice and racism while celebrating the different cultures and identities that make our community rewarding and meaningful.

Stop by Creative Arts 127 and pick up something new to read.



## **Mathematics for Human Flourishing**

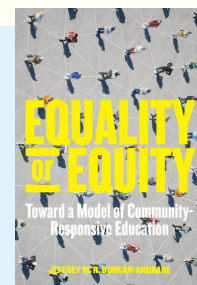
by Francis Su

In this profound book, written for a wide audience but especially for those disenchanted by their past experiences, an award-winning mathematician and educator weaves parables, puzzles, and personal reflections to show how mathematics meets basic human desires—such as for play, beauty, freedom, justice, and love—and cultivates virtues essential for human flourishing. These desires and virtues, and the stories told here, reveal how mathematics is intimately tied to being human.

## **Equality or Equity: Toward a Model of Community-Responsive Education**

by Jeffrey M. R. Duncan-Andrade

A leading scholar-practitioner and ardent proponent of culturally responsive forms of education, Jeffrey M. R. Duncan-Andrade aims to settle the debates over whether we should work toward a public education system built on the goal of equality or equity. Duncan-Andrade centers his argument on the importance of creating meaningful education experiences for all students, particularly for low-income students of color and immigrant students, who have gained relatively fewer benefits from decades of equality-focused education reform.



You've probably played Tic-Tac-Toe before. But have you ever played Tic-Tac-No?

Like Tic-Tac-Toe, Tic-Tac-No is a 2 player game played on a 3 x 3 grid. But there are some important differences:

In Tic-Tac-No, both players play Xs (no Os)

In Tic-Tac-No, if you place an X so there are 3 Xs in a line, you lose

You lose if you make 3 in a line with any 3 Xs, regardless of who placed them

So your goal is to avoid making 3 in a line, and to force your opponent to make 3 in a line.

Can you guarantee you win if you go 1st?

The first five people to visit our office, Creative Arts 127, and beat one of our student assistants at this game will win a prize (but you can only play against a student assistant once — no rematches!).

## PUZZLE CORNER

Do you have an interest in puzzles like this and teaching kids? Join SF Math Circle and teach 2nd - 8th grade kids while gaining teaching experience. Visit our opportunities page and find out how to join.

Got the answer? The first five people to visit our office, Creative Arts 127, with the correct answer will win a prize. The winners and the answers will be revealed in our next newsletter.

February's answer: 6

### We Would Love to Hear from You!

Your support and input at CSME is important to us. Let us know if you have feedback you'd like to offer—suggestions for student/teacher spotlights, book recommendations, etc. Have a club you'd like to advertise? Let us know about it!

Feel free to leave comments through the QR code or link provided!  
[https://sfsu.co1.qualtrics.com/jfe/form/SV\\_74cHrE7WXY8imiO](https://sfsu.co1.qualtrics.com/jfe/form/SV_74cHrE7WXY8imiO)



### Q&A

Got more questions about the Center or one of our programs? Fill out our Qualtrics survey and we'll get back to you.

Feel free to leave any questions through the QR code or link provided. [https://qfreeaccountssjc1.az1.qualtrics.com/jfe/form/SV\\_1YRXJxYRd5O9dNY](https://qfreeaccountssjc1.az1.qualtrics.com/jfe/form/SV_1YRXJxYRd5O9dNY)



### Keep Up With CSME News!

Subscribe to CSME's Mailing List and receive updates and announcements, including our monthly newsletters. Subscribe by clicking the link or scanning the QR code:  
[https://qfreeaccountssjc1.az1.qualtrics.com/jfe/form/SV\\_2s1liWxVkuEPqu2](https://qfreeaccountssjc1.az1.qualtrics.com/jfe/form/SV_2s1liWxVkuEPqu2)



### Donate to CSME

If you'd like to help CSME continue to support equity in STEM education and teacher preparation on our campus and across the Bay Area, please consider a donation to our program. Visit our website at [csme.sfsu.edu/donate](https://csme.sfsu.edu/donate), click the 'Support CSME' dropdown menu, and select donate.

If you're interested in discussing a donation, contact our director, Tendai Chitewere ([tendai@sfsu.edu](mailto:tendai@sfsu.edu)).

Thank you!

### Follow Our Instagram

Keep up with CSME on our Instagram page at [@csme\\_sfsu](https://www.instagram.com/csme_sfsu)! Get information about our events, programs, and important CSME updates.



@csme\_sfsu